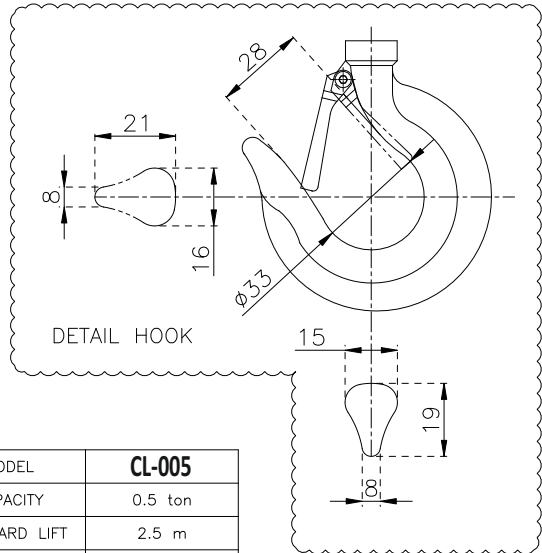
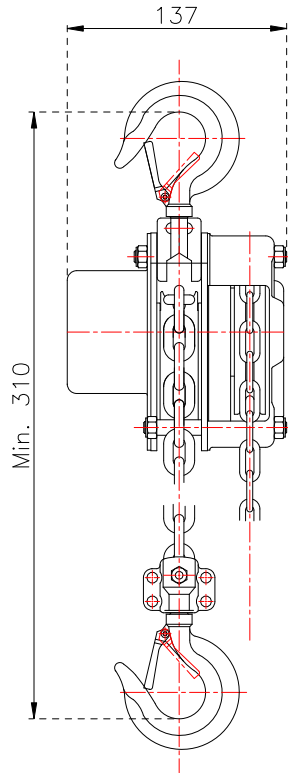
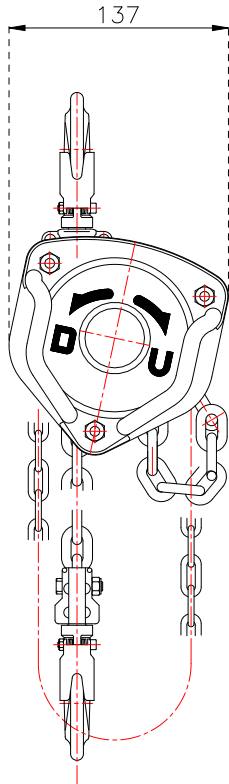




RIKEN

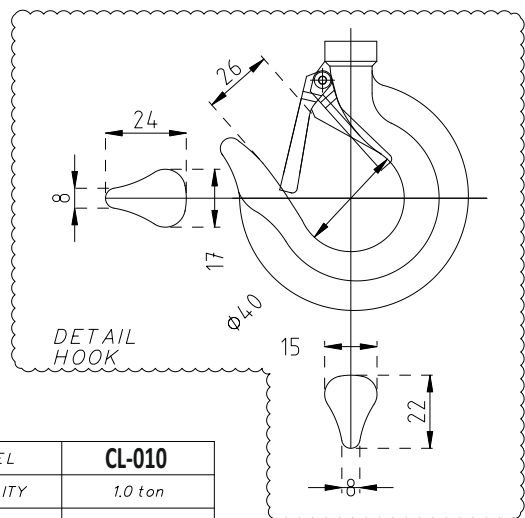
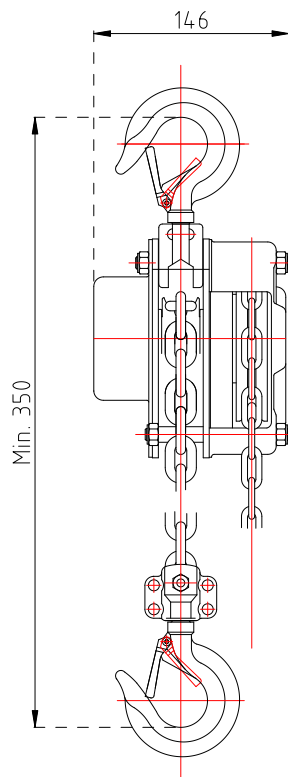
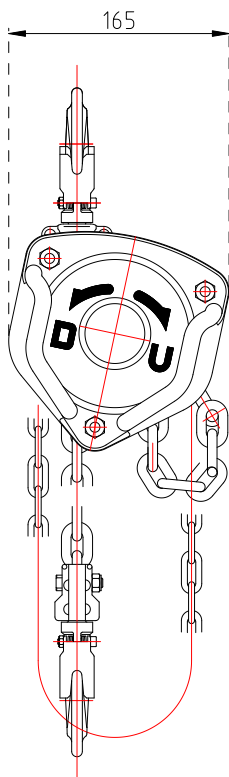
Specialized manufacturer of the best Manual Chain Hoist

CL MANUAL CHAIN HOIST



| | |
|----------------|---------------|
| MODEL | CL-005 |
| CAPACITY | 0.5 ton |
| STANDARD LIFT | 2.5 m |
| TEST LOAD | 0.75 ton |
| PULLING EFFORT | 24 kg |
| LOAD CHAIN | ø6x1 lines |
| HAND CHAIN | ø5x25 mm |
| NET WEIGHT | 10 kg |

CL-005



| | |
|----------------|---------------|
| MODEL | CL-010 |
| CAPACITY | 1.0 ton |
| STANDARD LIFT | 2.5 m |
| TEST LOAD | 1.5 ton |
| PULLING EFFORT | 32 kg |
| LOAD CHAIN | ?6x.1 lines |
| HAND CHAIN | ?5x.25 mm |
| NET WEIGHT | 12 kg |

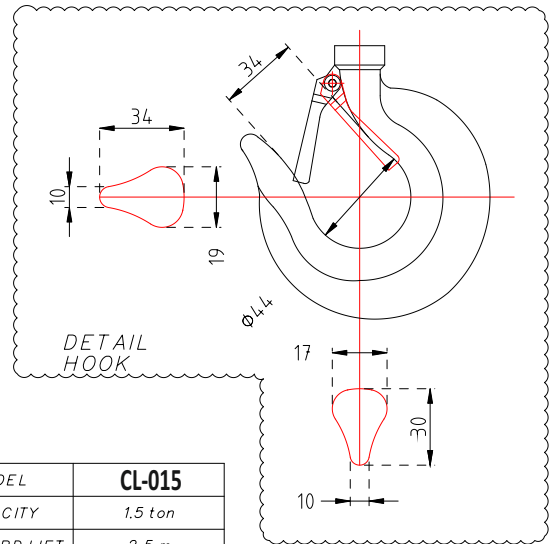
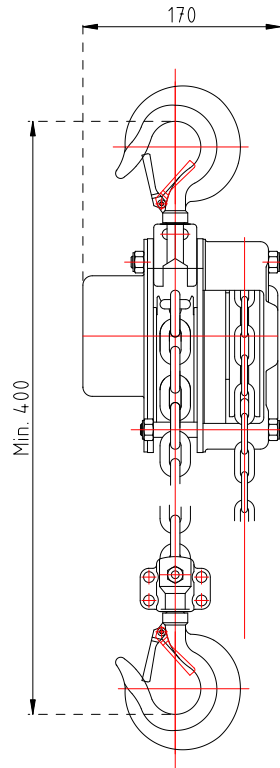
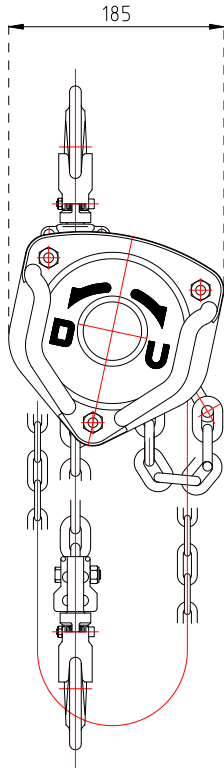
CL-010



RIKEN

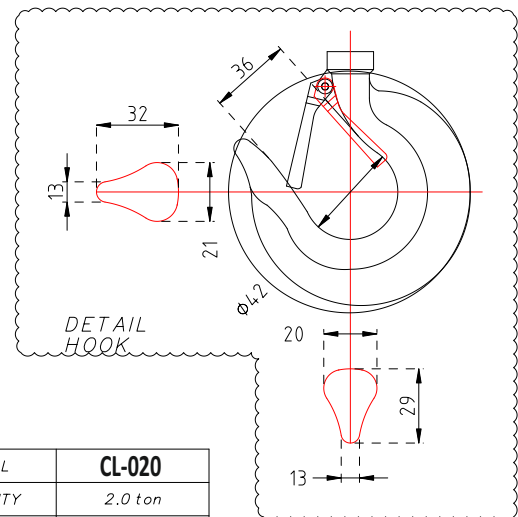
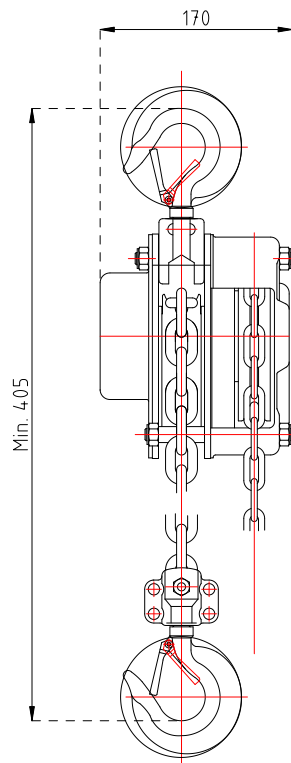
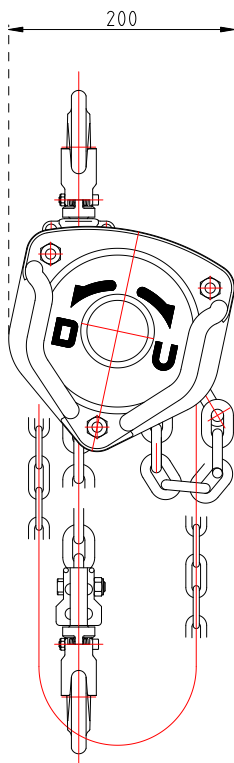
Specialized manufacturer of the best Manual Chain Hoist

CL MANUAL CHAIN HOIST



| | |
|----------------|---------------|
| MODEL | CL-015 |
| CAPACITY | 1.5 ton |
| STANDARD LIFT | 2.5 m |
| TEST LOAD | 2.25 ton |
| PULLING EFFORT | 33 kg |
| LOAD CHAIN | ?8x 1 lines |
| HAND CHAIN | ?5x 25 mm |
| NET WEIGHT | 19 kg |

CL-015



| | |
|----------------|---------------|
| MODEL | CL-020 |
| CAPACITY | 2.0 ton |
| STANDARD LIFT | 3.0 m |
| TEST LOAD | 3.0 ton |
| PULLING EFFORT | 37 kg |
| LOAD CHAIN | ?8x 1 lines |
| HAND CHAIN | ?5x 25 mm |
| NET WEIGHT | 20 kg |

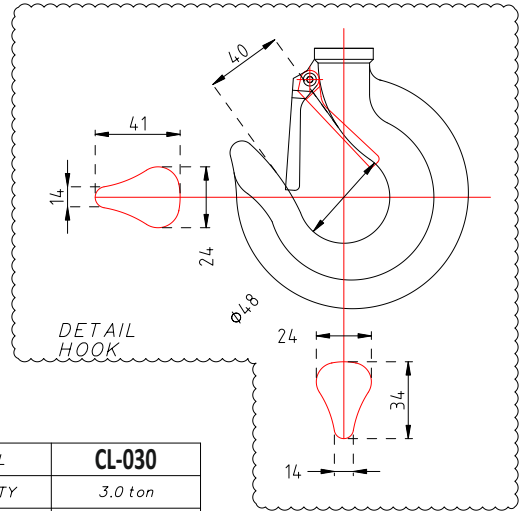
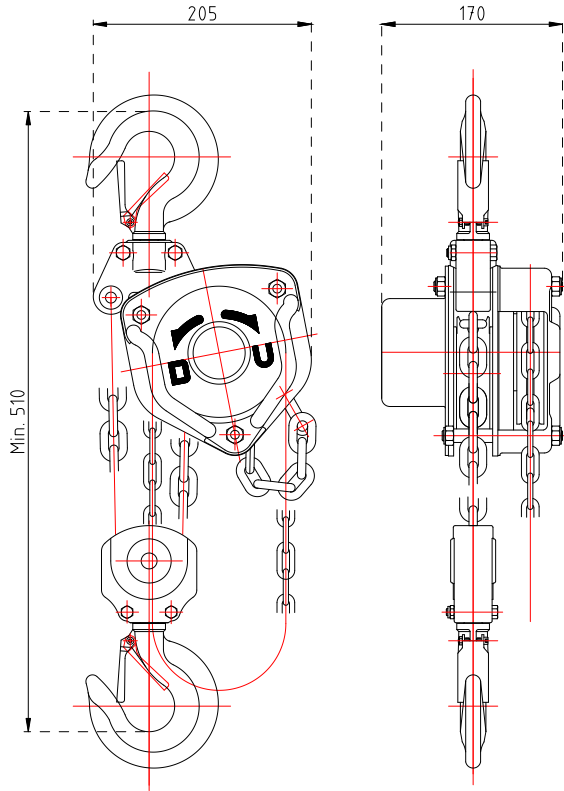
CL-020



RIKEN

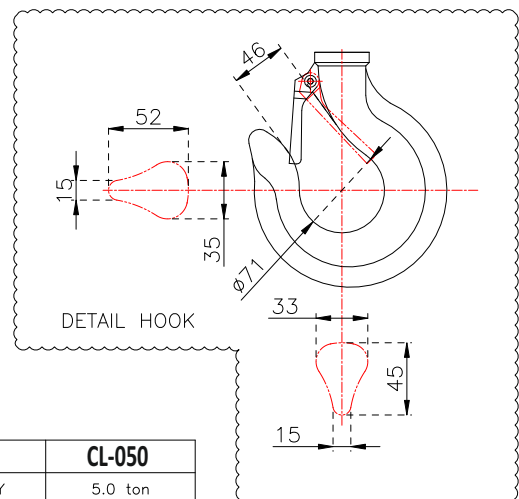
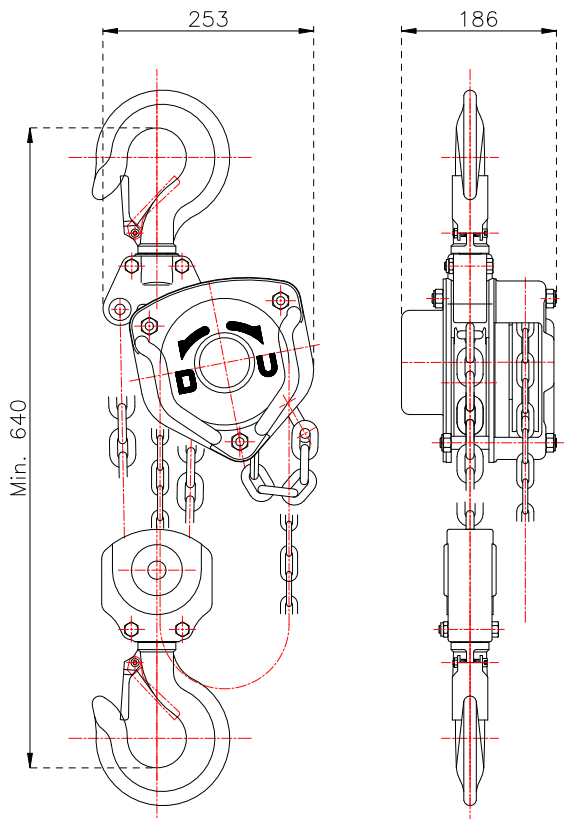
Specialized manufacturer of the best Manual Chain Hoist

CL MANUAL CHAIN HOIST



| | |
|----------------|---------------|
| MODEL | CL-030 |
| CAPACITY | 3.0 ton |
| STANDARD LIFT | 3.0 m |
| TEST LOAD | 4.5 ton |
| PULLING EFFORT | 35 kg |
| LOAD CHAIN | ?8x.2 lines |
| HAND CHAIN | ?5x.25 mm |
| NET WEIGHT | 27 kg |

CL-030



| | |
|----------------|---------------|
| MODEL | CL-050 |
| CAPACITY | 5.0 ton |
| STANDARD LIFT | 3.0 m |
| TEST LOAD | 7.5 ton |
| PULLING EFFORT | 42 kg |
| LOAD CHAIN | ø10x2 lines |
| HAND CHAIN | ø5x25 mm |
| NET WEIGHT | 45.5 kg |

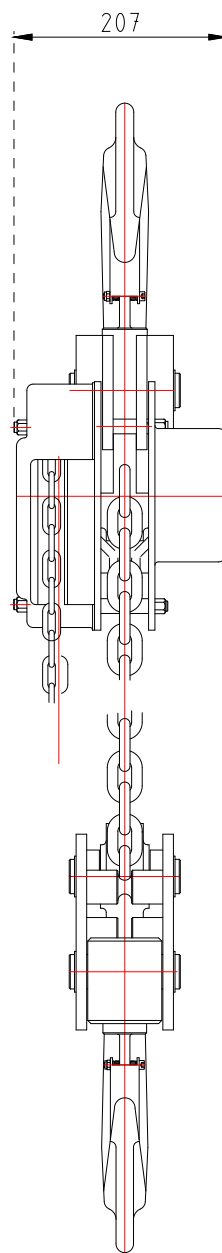
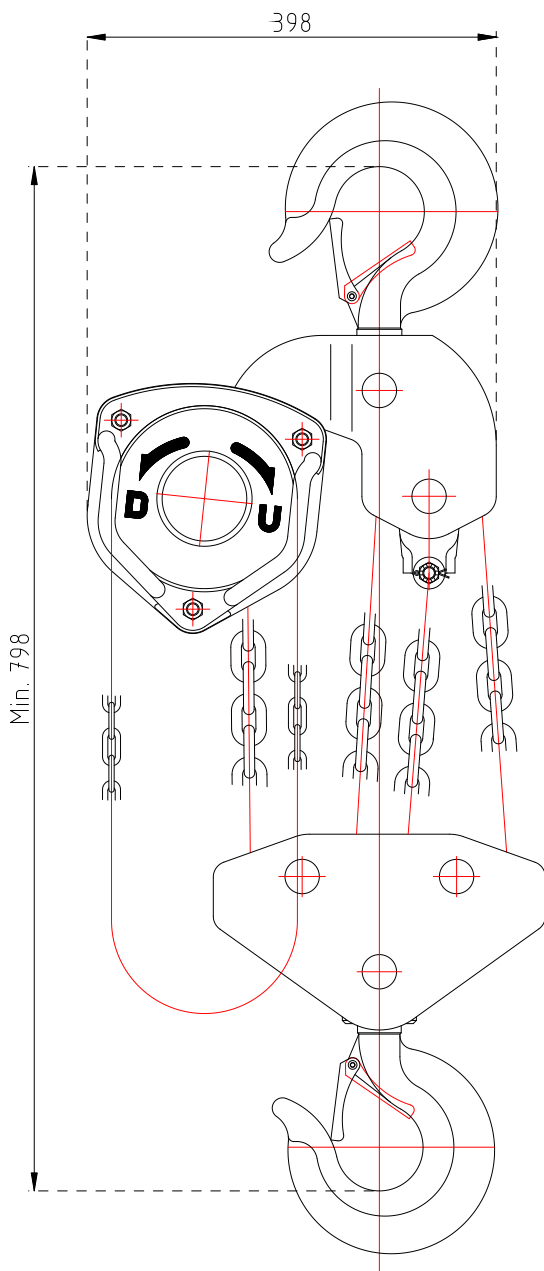
CL-050



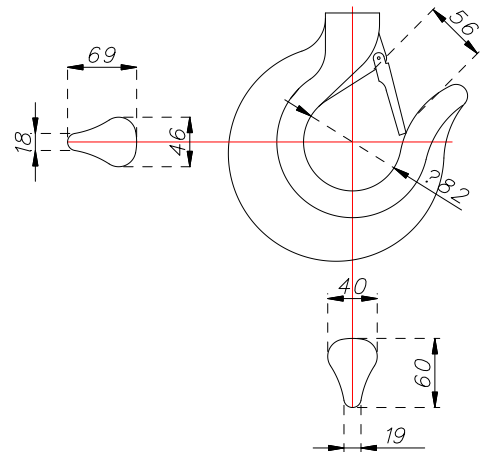
RIKEN

Specialized manufacturer of the best Manual Chain Hoist

CL MANUAL CHAIN HOIST



| MODEL | CL-075 |
|-----------------------|---------|
| CAPACITY (ton) | 7.5 |
| STANDARD LIFT (m) | 3.0 |
| TEST LOAD (ton) | 11.25 |
| PULLING EFFORT (kg) | 42 |
| LOAD CHAIN (?x lines) | 10x 4 |
| HAND CHAIN (?x mm) | 5.0x 25 |
| NET WEIGHT (kg) | 83 |



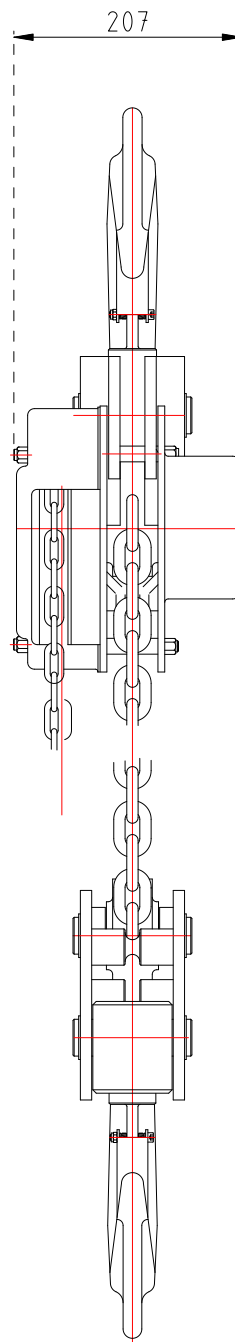
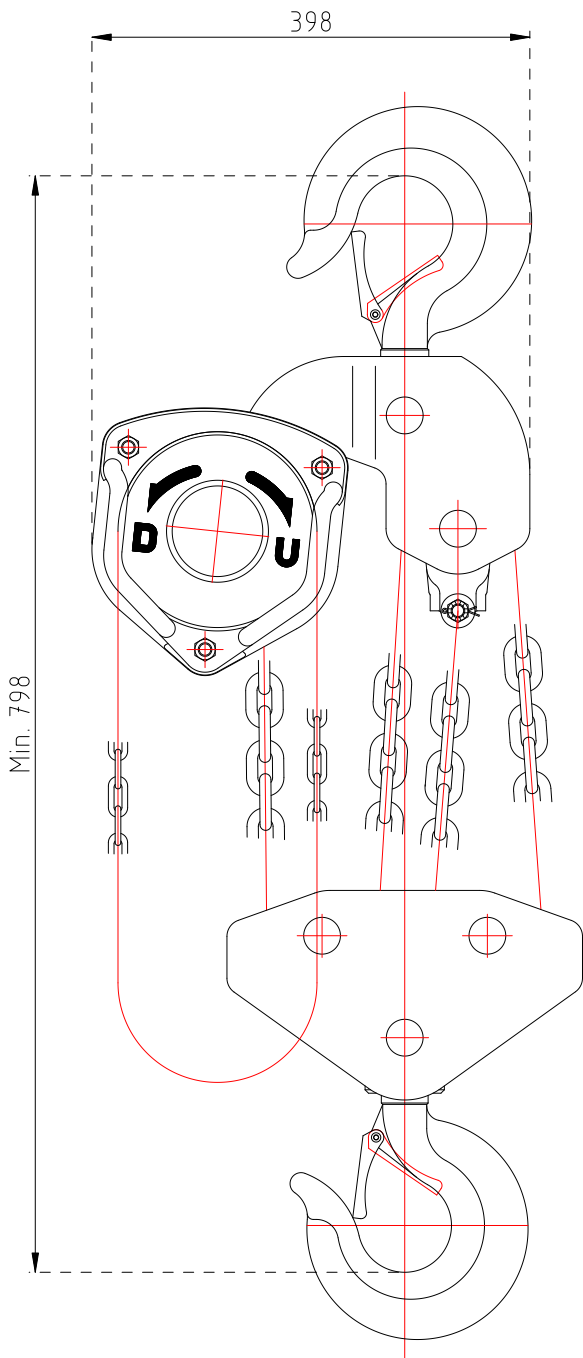
CL-075



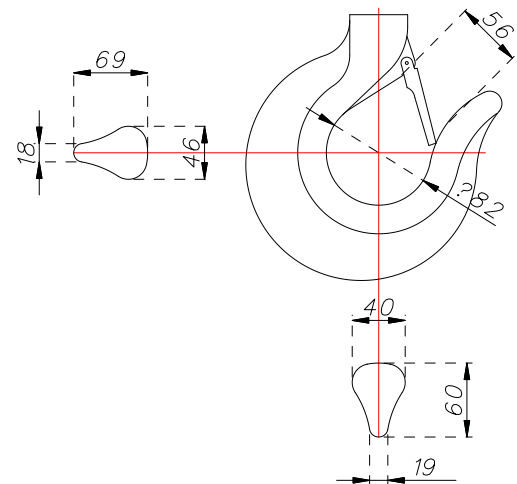
RIKEN

Specialized manufacturer of the best Manual Chain Hoist

CL MANUAL CHAIN HOIST



| MODEL | CL-100 |
|-----------------------|---------|
| CAPACITY (ton) | 10 |
| STANDARD LIFT (m) | 3.0 |
| TEST LOAD (ton) | 15 |
| PULLING EFFORT (kg) | 42 |
| LOAD CHAIN (?x lines) | 10x 4 |
| HAND CHAIN (?x mm) | 5.0x 25 |
| NET WEIGHT (kg) | 83 |



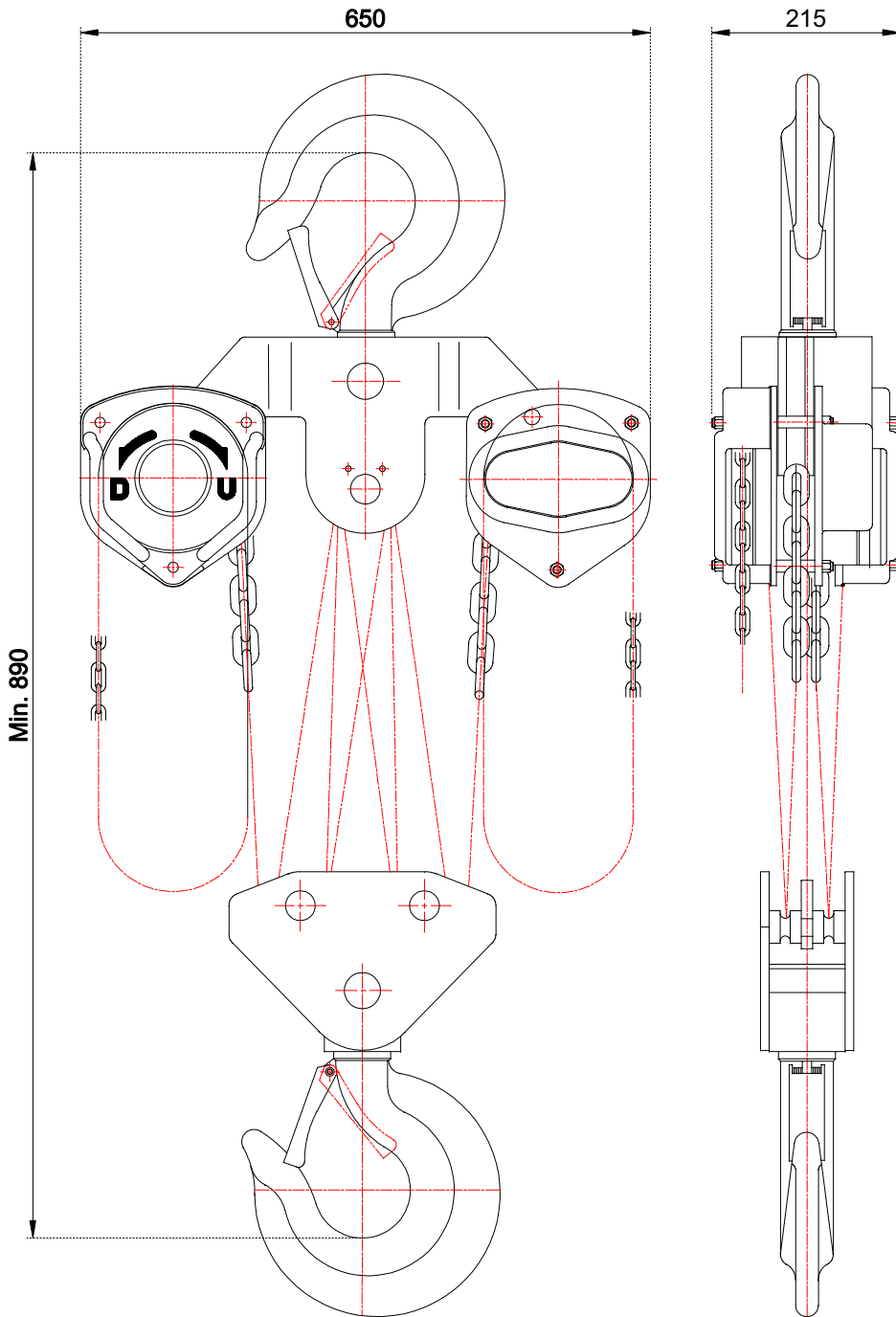
CL-100



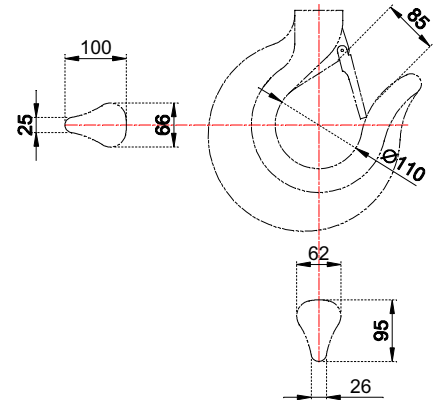
RIKEN

Specialized manufacturer of the best Manual Chain Hoist

CL MANUAL CHAIN HOIST



| MODEL | CL-150 |
|---------------------|--------|
| CAPACITY (ton) | 15 |
| STANDARD LIFT (m) | 3.0 |
| TEST LOAD (ton) | 22.5 |
| PULLING EFFORT (kg) | 2x42 |
| LOAD CHAIN (lines) | 10x8 |
| HAND CHAIN (xmm) | 5.0x25 |
| NET WEIGHT (kg) | 193 |



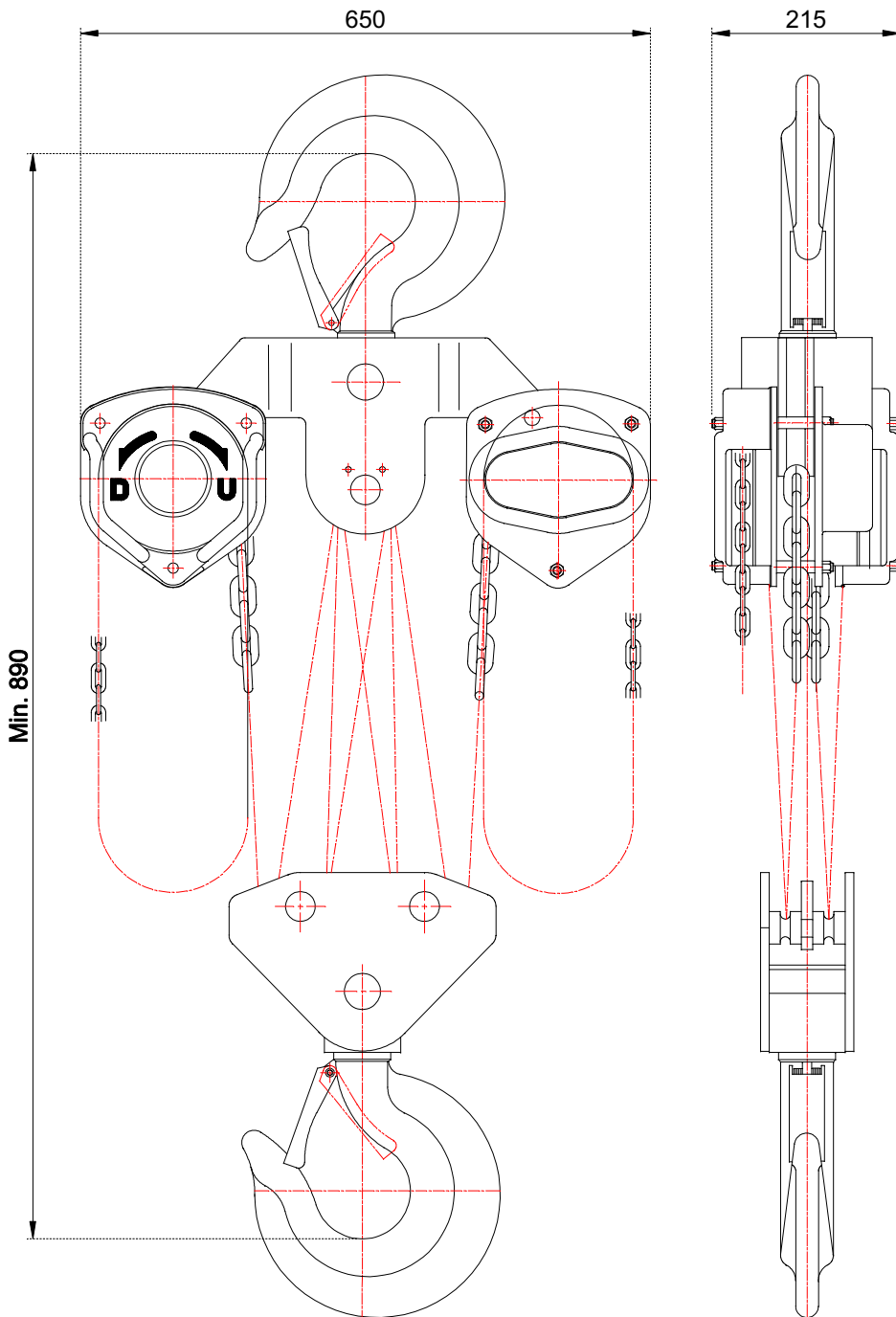
CL-150



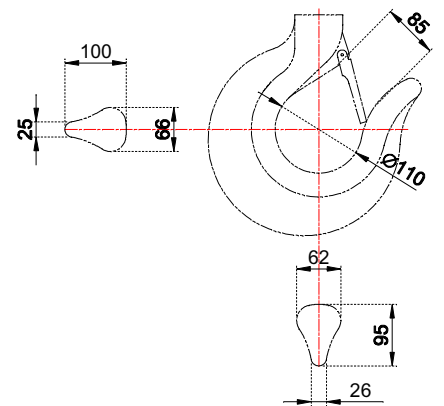
RIKEN

Specialized manufacturer of the best Manual Chain Hoist

CL MANUAL CHAIN HOIST



| MODEL | CL-200 |
|---------------------|--------|
| CAPACITY (ton) | 20 |
| STANDARD LIFT (m) | 3.0 |
| TEST LOAD (ton) | 30 |
| PULLING EFFORT (kg) | 2x42 |
| LOAD CHAIN (lines) | 10x8 |
| HAND CHAIN (mm) | 5.0x25 |
| NET WEIGHT (kg) | 193 |



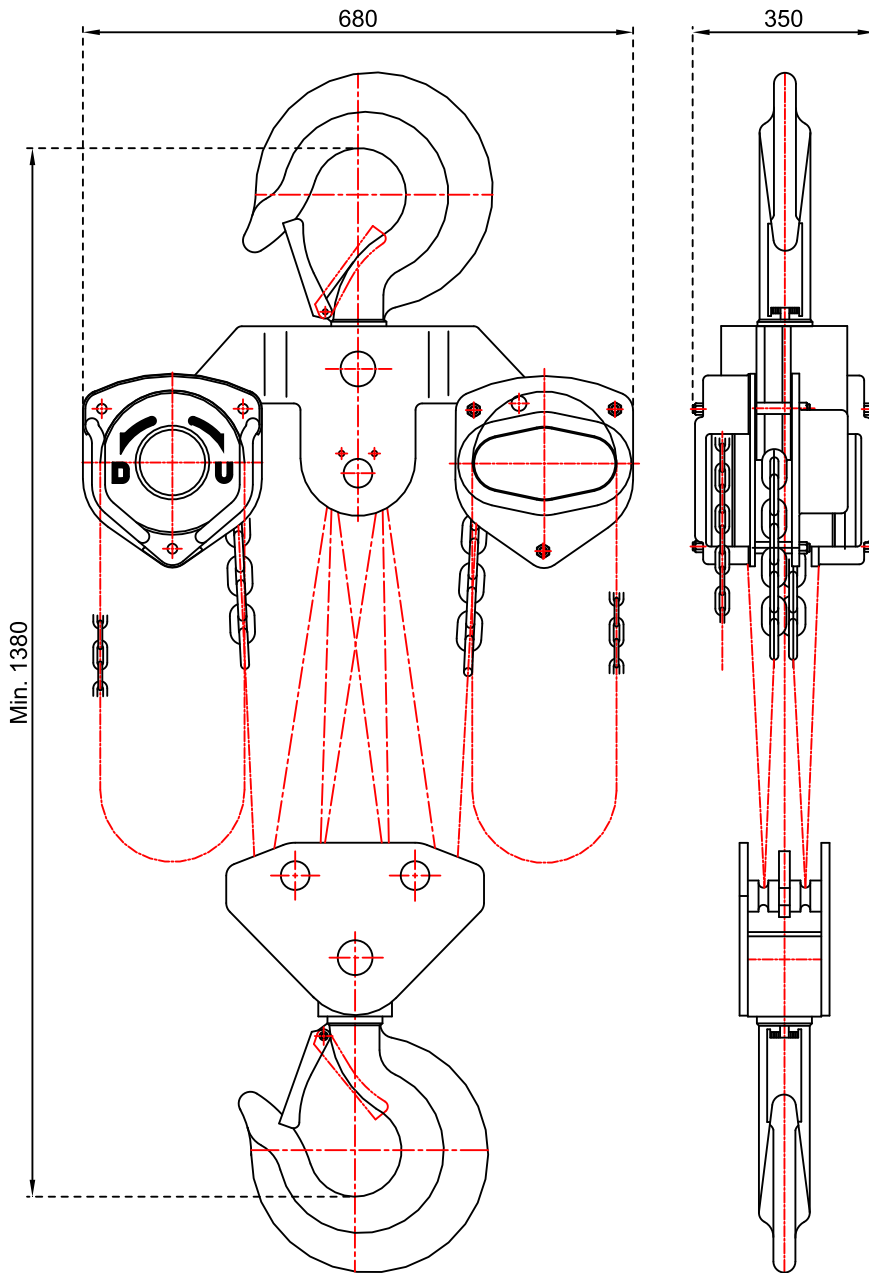
CL-200



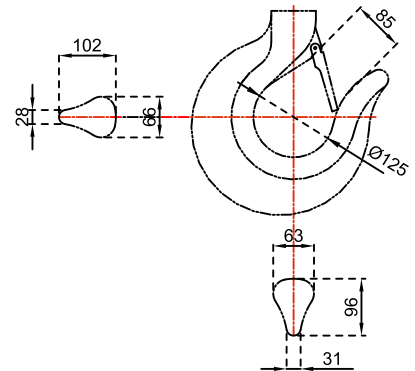
RIKEN

Specialized manufacturer of the best Manual Chain Hoist

CL MANUAL CHAIN HOIST



| MODEL | CL-300 |
|----------------------|----------|
| CAPACITY (Ton) | 30 |
| TEST LOAD (Ton) | 38 |
| STANDARD LIFT (m) | 3.5 |
| PULLING EFFORT (kg) | 2x42 |
| LOAD CHAIN (Øxlines) | 10 x 12 |
| HAND CHAIN (Øxmm) | 5.0 x 25 |
| NET WEIGHT (kg) | 268 |



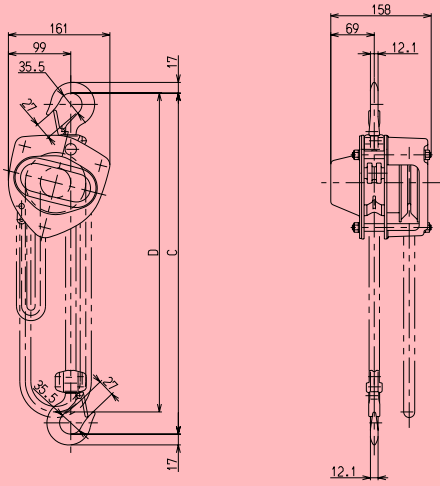
CL-300



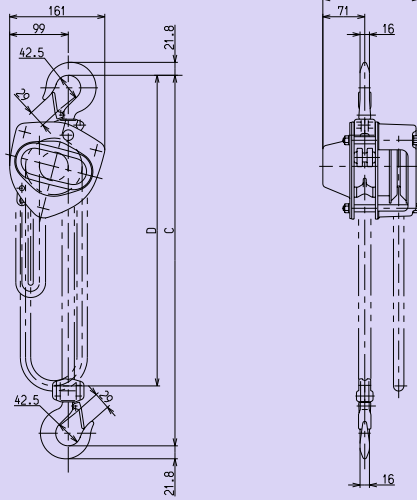
RIKEN

Specialized manufacturer of the best Manual Chain Hoist

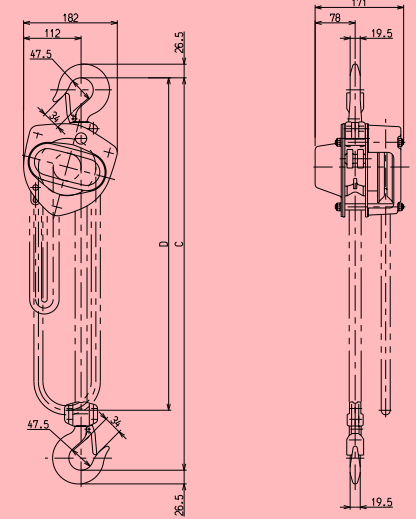
HAK-CB MANUAL CHAIN HOIST



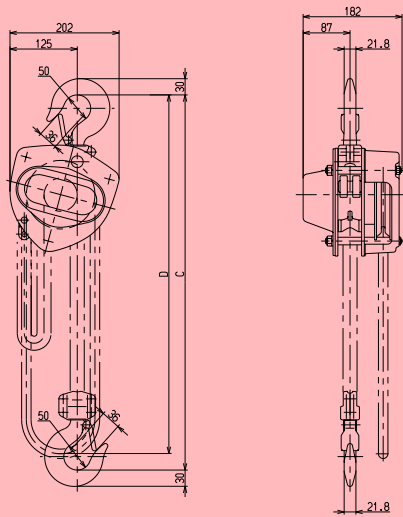
500Kgs



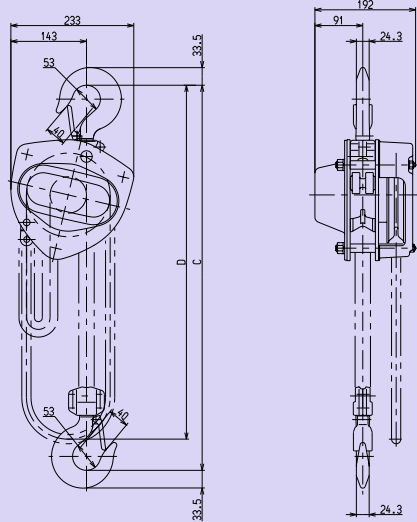
1 Ton



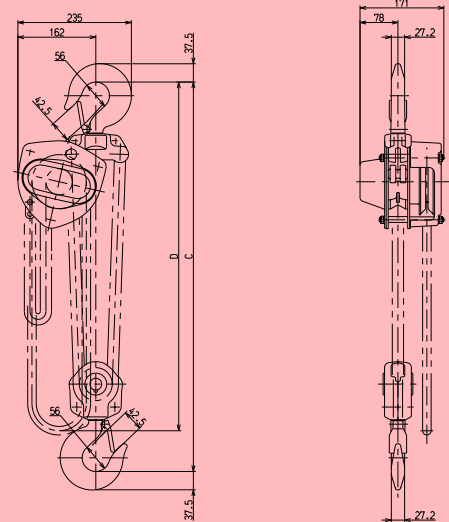
1.5 Ton



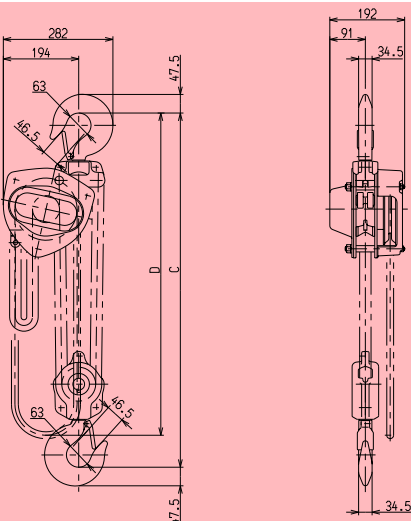
2 Ton



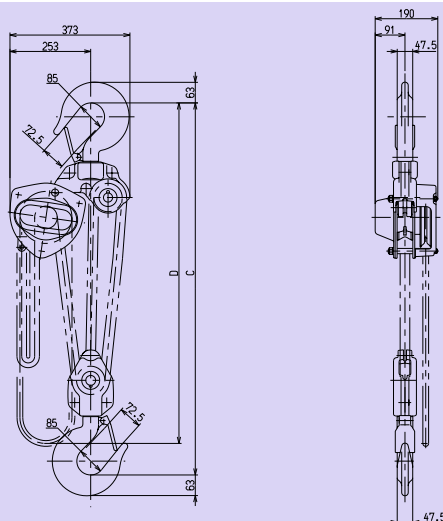
2.5 Ton



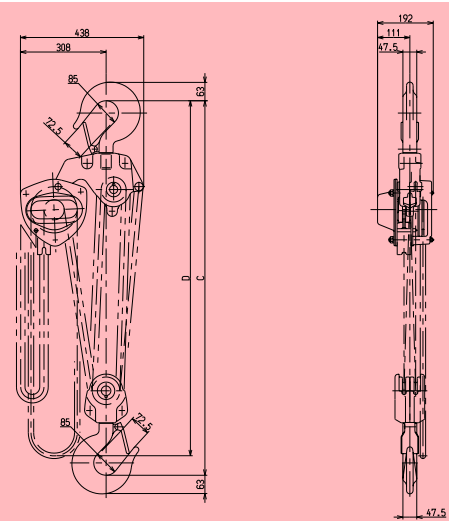
3 Ton



5 Ton



7.5 Ton



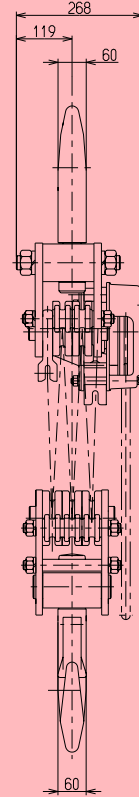
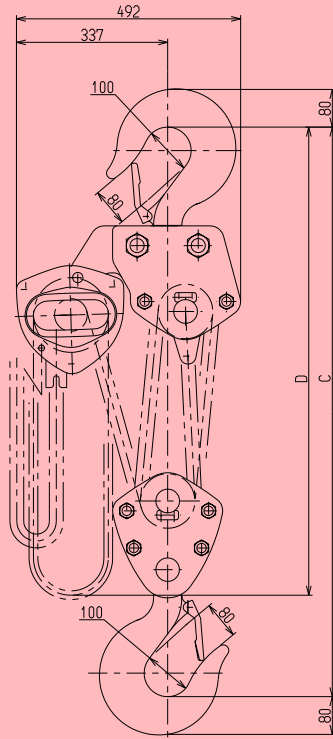
10 Ton



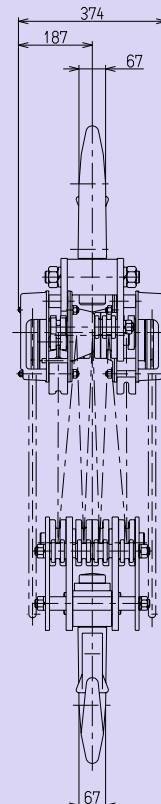
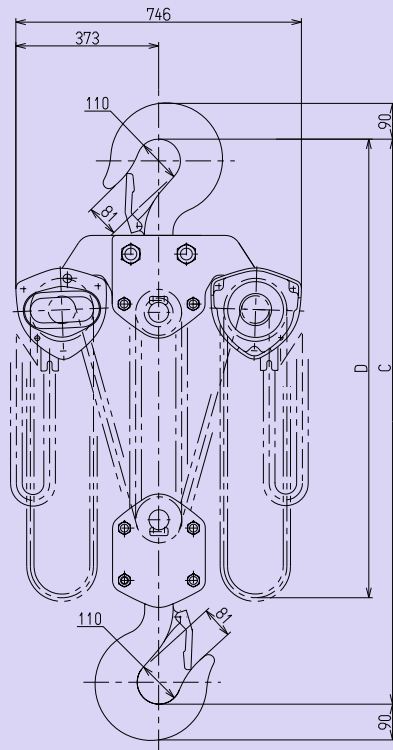
RIKEN

Specialized manufacturer of the best Manual Chain Hoist

HAK-CB MANUAL CHAIN HOIST



15 Ton



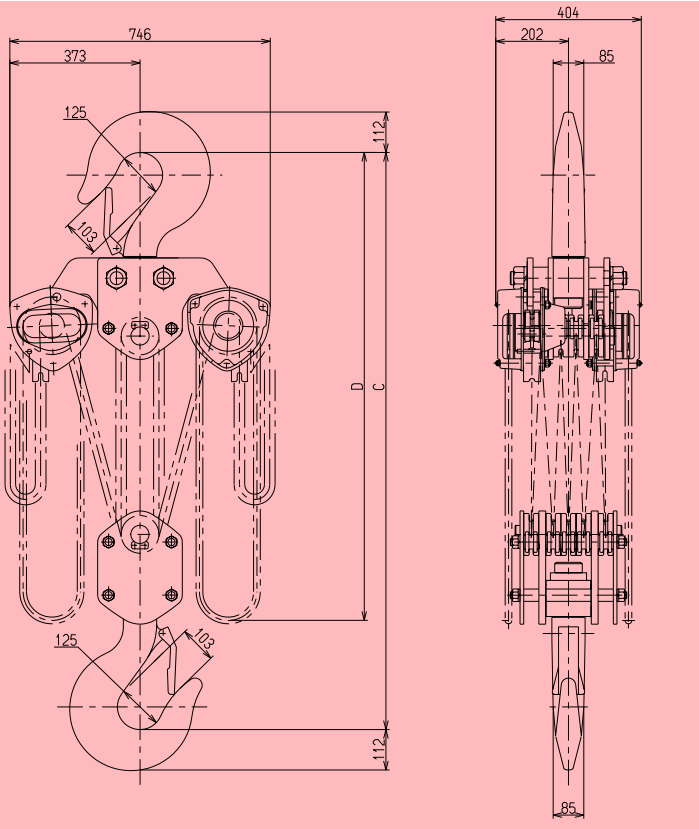
20 Ton



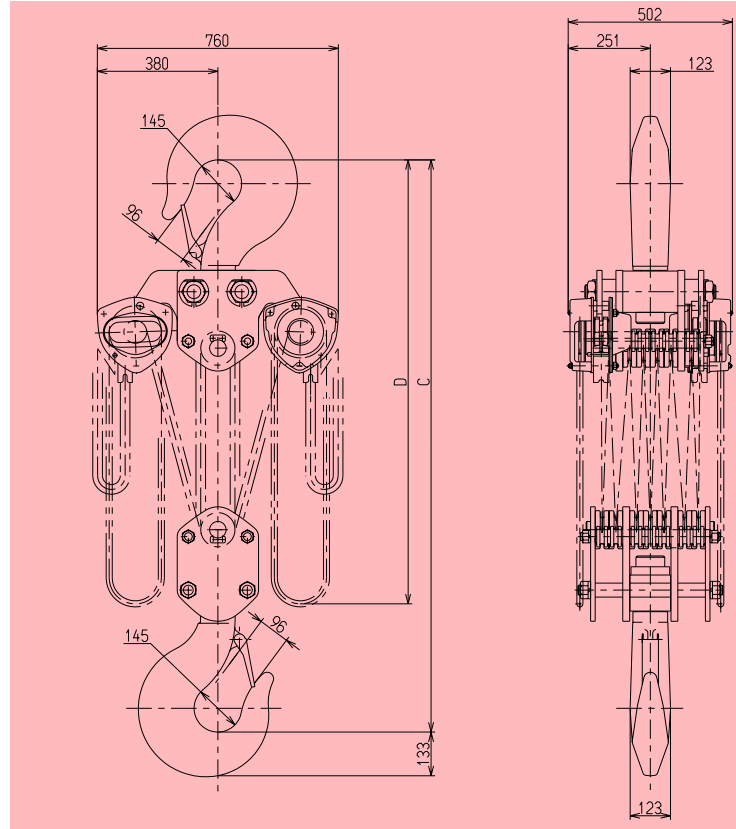
RIKEN

Specialized manufacturer of the best Manual Chain Hoist

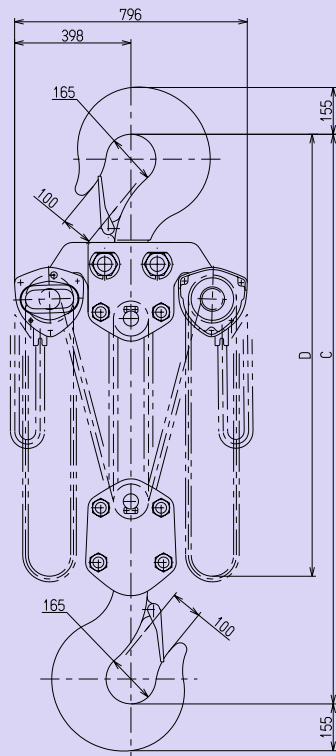
HAK-CB MANUAL CHAIN HOIST



30 Ton



40 Ton



50 Ton



RIKEN

Specialized manufacturer of the best Manual Chain Hoist

HAK-CB MANUAL CHAIN HOIST

Operating environmental conditions

| | | |
|---|---------------------------------------|--|
| Operating temperature range CB: -40°C to +60°C | This product cannot be used in water. | Materials Standard materials are used. Special materials such as sparkless materials and asbestos are not used. With regard to the environmental load substances, 6 substances defined in the RoHS directives are not contained in this product. |
| | | |

SPECIFICATIONS

| Rated Load (W.L.L.) (t) | Code | Std.Lift (m) | Hand Chain Folded Length (m) | Chain Pull to Lift Full Load (N)[kgf] | Chain O'hauled to Lift Load One Meter (m) | Load Chain Dia.xChain Fall (mm) | Test Load (t) | Mass [Net weight] (kg) | Shipping Mass [weight] [approx.](kg) | Mass [weight] in kg for Additional One Meter of Lift (kg) |
|-------------------------|--------|--------------|------------------------------|---------------------------------------|---|---------------------------------|---------------|------------------------|--------------------------------------|---|
| 0.5 | HAK-CB | 2.5 | 2.5 | 235 [24] | 25 | 5.0x1 | 0.75 | 10 | 10.5 | 1.5 |
| 1 | HAK-CB | 2.5 | 2.5 | 284 [29] | 43 | 6.0x1 | 1.5 | 11.5 | 12 | 1.8 |
| 1.5 | HAK-CB | 2.5 | 2.5 | 343 [35] | 57 | 7.1x1 | 2.4 | 14.5 | 15 | 2.1 |
| 2 | HAK-CB | 3.0 | 3.0 | 353 [36] | 70 | 8.0x1 | 3 | 20 | 21 | 2.3 |
| 2.5 | HAK-CB | 3.0 | 3.0 | 323 [33] | 99 | 9.0x1 | 3.8 | 27 | 28 | 2.7 |
| 3 | HAK-CB | 3.0 | 3.0 | 353 [36] | 114 | 7.1x2 | 4.8 | 24 | 26 | 3.2 |
| 5 | HAK-CB | 3.0 | 3.5 | 333 [34] | 198 | 9.0x2 | 7.5 | 41 | 43 | 4.4 |
| 7.5 | HAK-CB | 3.5 | 4.0 | 343 [35] | 297 | 9.0x3 | 9.5 | 63 | 66 | 6.2 |
| 10 | HAK-CB | 3.5 | 4.0 | 353 [36] | 396 | 9.0x4 | 12.5 | 83 | 91 | 7.9 |
| 15 | HAK-CB | 3.5 | 4.5 | 363 [37] | 594 | 9.0x6 | 20 | 155 | 165 | 11.4 |
| 20 | HAK-CB | 3.5 | 4.5 | 353 [36] x2 | 396x2 | 9.0x8 | 25 | 235 | 305 | 15.8 |
| 30 | HAK-CB | 3.5 | 4.5 | 421 [43] x2 | 495x2 | 9.0x10 | 40 | 310 | 400 | 19.2 |
| 40 | HAK-CB | 3.5 | 4.5 | 421 [43] x2 | 693x2 | 9.0x14 | 50 | 480 | 630 | 26.2 |
| 50 | HAK-CB | 3.5 | 4.5 | 480 [49] x2 | 792x2 | 9.0x16 | 62.5 | 640 | 790 | 29.7 |

- Other capacities are available upon request.
- Any lift of chain is available upon request.
- When ordering, specify the lifting height.
- Chain falls vary depending on the capacity of each hoist.

DIMENSIONS (mm)

| Rated Load (W.L.L.) (t) | Headroom :C | a | b | d | e | f | g | s | t | u | v | w | x |
|-------------------------|-------------|-----|-----|------|-----|-----|------|------|------|------|-------|-------|-----|
| 0.5 | 285 | 158 | 161 | 2500 | 69 | 99 | 27 | 35.5 | 12.1 | 17 | 77 | 35 | 89 |
| 1 | 295 | 162 | 161 | 2500 | 71 | 99 | 29 | 42.5 | 16 | 21.8 | 93 | 41 | 101 |
| 1.5 | 350 | 171 | 182 | 2500 | 78 | 112 | 34 | 47.5 | 19.5 | 26.5 | 106 | 47 | 119 |
| 2 | 375 | 182 | 202 | 3000 | 87 | 125 | 36 | 50 | 21.8 | 30 | 116 | 49 | 124 |
| 2.5 | 420 | 192 | 233 | 3000 | 91 | 143 | 40 | 53 | 24.3 | 33.5 | 126 | 53 | 136 |
| 3 | 510 | 171 | 235 | 3100 | 78 | 162 | 42.5 | 56 | 27.2 | 37.5 | 138 | 57 | 148 |
| 5 | 600 | 192 | 282 | 3600 | 91 | 194 | 46.5 | 63 | 34.5 | 47.5 | 161 | 67.5 | 172 |
| 7.5 | 770 | 192 | 373 | 4200 | 91 | 253 | 72.5 | 85 | 47.5 | 63 | 231 | 97.5 | 275 |
| 10 | 760 | 192 | 438 | 4200 | 111 | 308 | 72.5 | 85 | 47.5 | 63 | 231 | 97.5 | 295 |
| 15 | 1020 | 268 | 492 | 4700 | 119 | 337 | 80 | 100 | 60 | 80 | 275 | 110 | 320 |
| 20 | 1180 | 374 | 746 | 4800 | 187 | 373 | 81 | 110 | 67 | 90 | 301 | 125 | 351 |
| 30 | 1300 | 404 | 746 | 4800 | 202 | 373 | 103 | 125 | 85 | 112 | 367 | 143 | 400 |
| 40 | 1480 | 502 | 760 | 4900 | 251 | 380 | 96 | 145 | 123 | 133 | 412.5 | 182.5 | 445 |
| 50 | 1560 | 544 | 796 | 4900 | 272 | 398 | 100 | 165 | 135 | 155 | 447.5 | 202.5 | 467 |



RIKEN

Specialized manufacturer of the best Manual Chain Hoist

CX STAINLESS STEEL

CHAIN HOIST

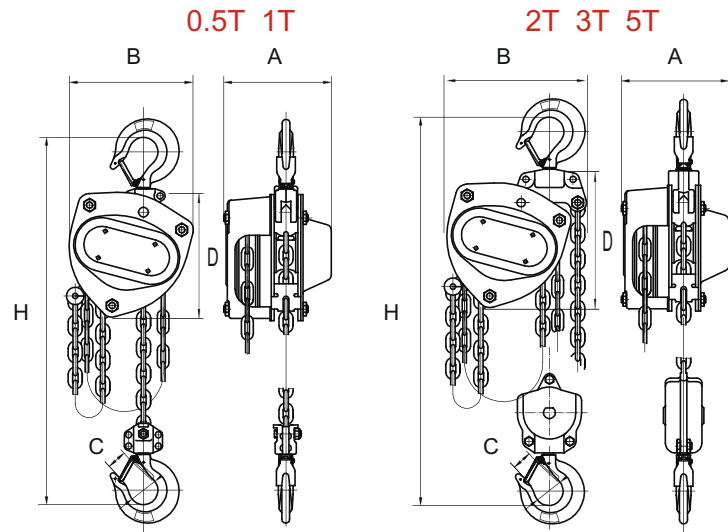
**FREE
SPARE SET
OF LATCHES**

Features

- Stainless Steel Type 304 Construction for Corrosion Resistance
- Fully Enclosed Gearing
- Fully Machined Lift Wheel
- Designed for Lifting or Pulling
- Minimal Load Lifting Effort
- Individual Test Certificate and Serial Number
- Forged Stainless Steel Hooks and Safety Latches
- Stainless Steel Hand & Load Chain
- Weather Proof Load Holding Brake
- All Gears and Shafts Run on Roller Bearings
- Stainless Steel Riveted ID Tags
- Low Headroom

**NEW
2023**

Standards - CE, AS1418.2, ASME B30.21, ASME B30.16



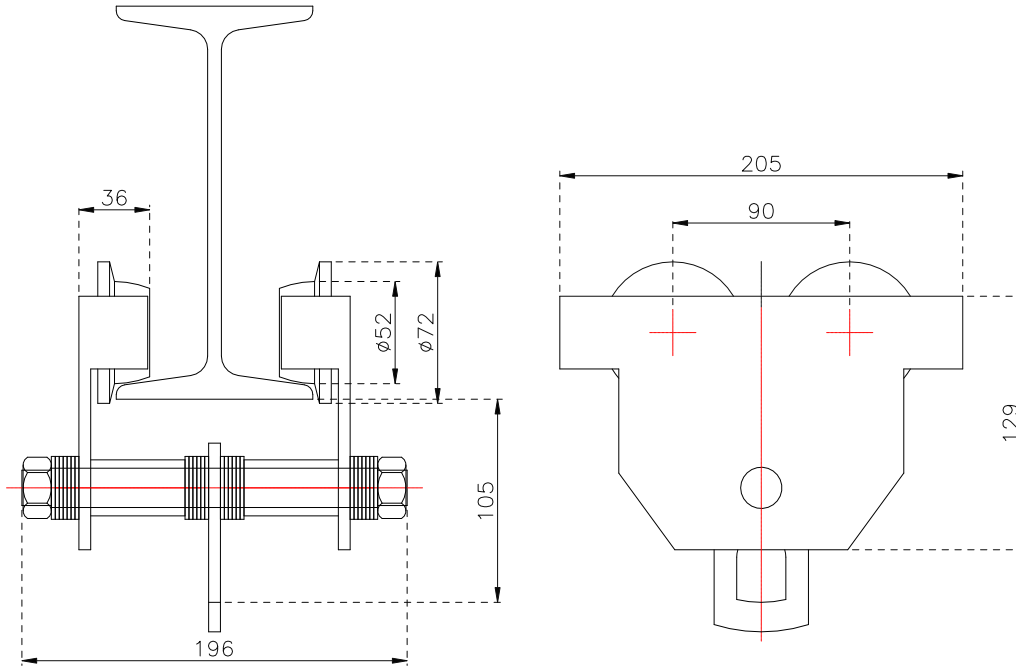
| | CX-005 | CX-010 | CX-020 | CX-030 | CX-050 |
|------------------------------|--------|--------|--------|--------|--------|
| Capacity (tons) | 0.5 | 1 | 2 | 3 | 5 |
| Falls of Chain | 1 | 1 | 1 | 2 | 2 |
| Test Load (tons) | 0.75 | 1.5 | 3 | 4.5 | 7.5 |
| Loadchain Diameter (mm) | 6 | 6 | 8 | 8 | 10 |
| Dimensional Information (mm) | A | 145 | 145 | 175 | 175 |
| | B | 160 | 160 | 190 | 200 |
| | C | 27 | 27 | 30 | 35 |
| | D | 165 | 165 | 190 | 190 |
| H | 370 | 370 | 425 | 530 | 688 |
| Net Weight (Kgs) | 11.5 | 11.5 | 17 | 28 | 38.5 |



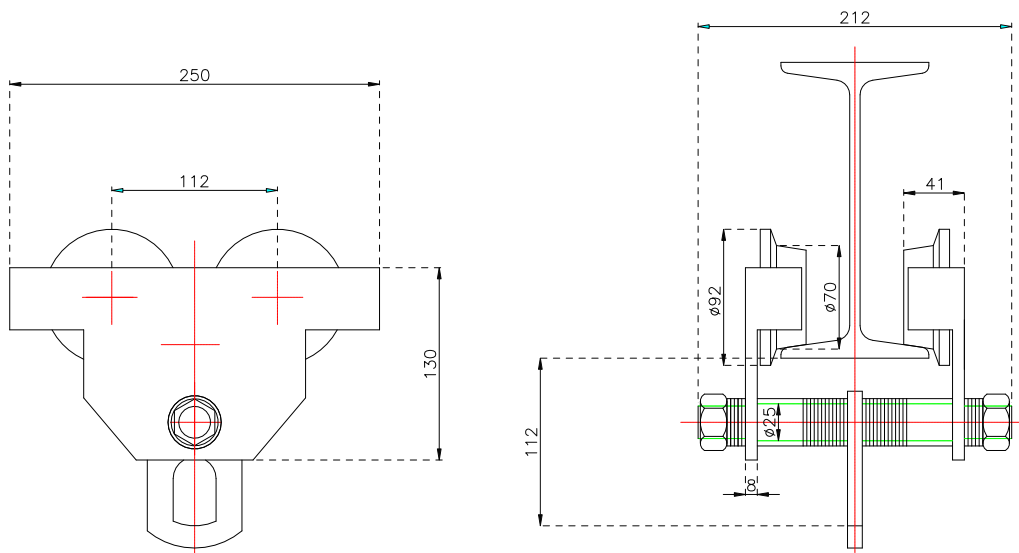
RIKEN

Specialized manufacturer of the best Plain/ Geared Trolley

TSP PLAIN TROLLEY



| | |
|----------------------|----------------|
| MODEL | TSP-005 |
| CAPACITY | 0.5 Ton |
| Min. RADIUS of CURVE | 900 mm |
| TEST LOAD | 0.75 Ton |
| NET WEIGHT | 7 kg |
| BEAM WIDTH | 78 ~ 133 mm |



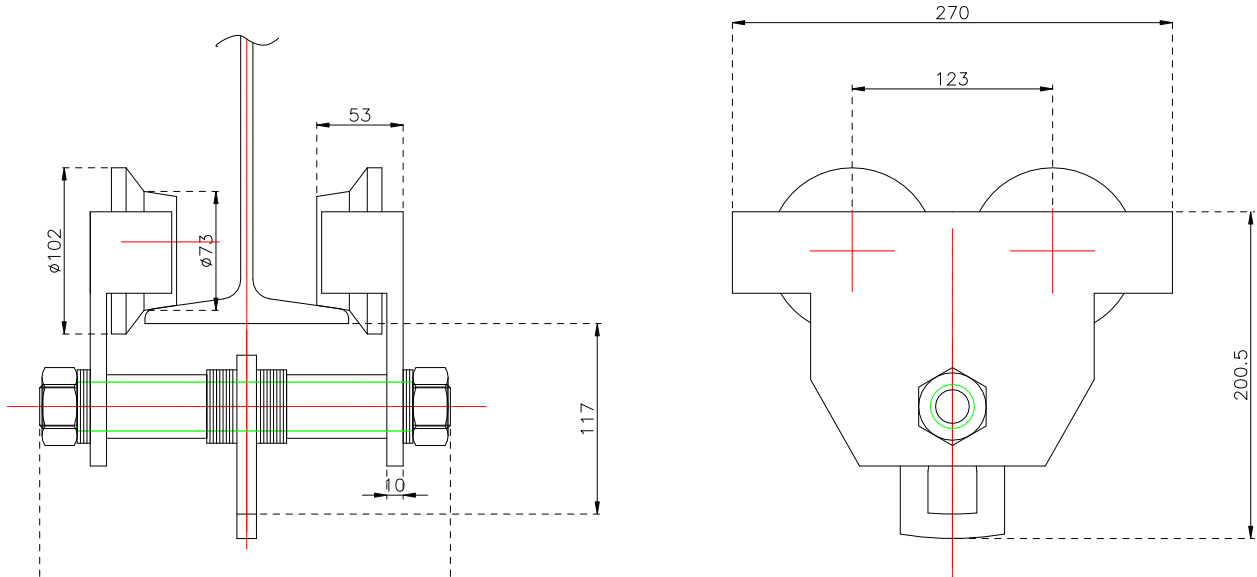
| | |
|----------------------|----------------|
| MODEL | TSP-010 |
| CAPACITY | 1 Ton |
| Min. RADIUS of CURVE | 1000 mm |
| TEST LOAD | 1.5 Ton |
| NET WEIGHT | 12 kg |
| BEAM WIDTH | 68 ~ 126 mm |



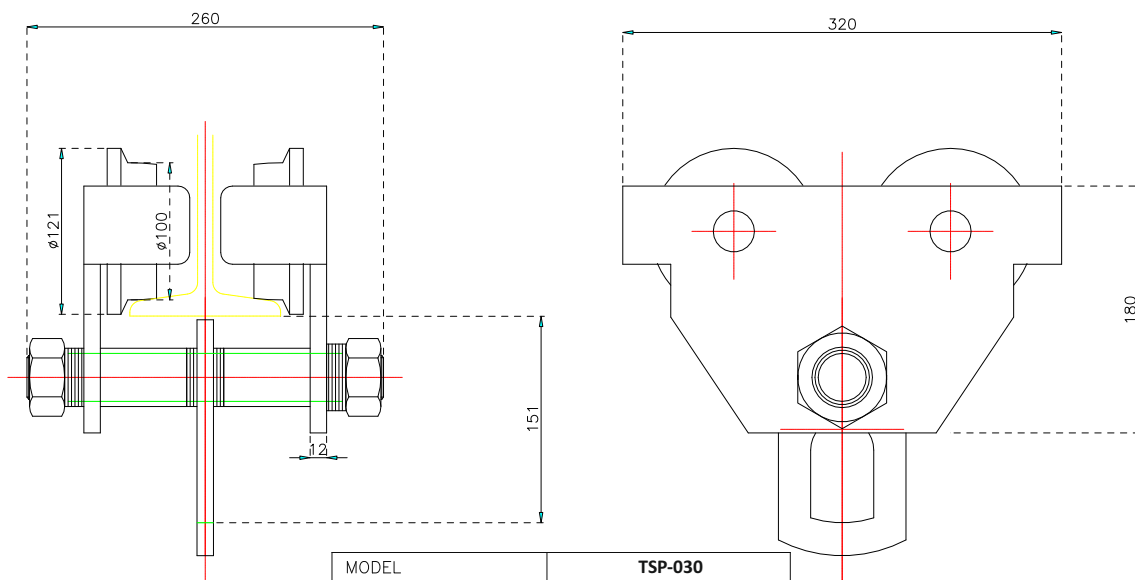
RIKEN

Specialized manufacturer of the best Plain/ Geared Trolley

TSP PLAIN TROLLEY



| | |
|----------------------|----------------|
| MODEL | TSP-020 |
| CAPACITY | 2 Ton |
| Min. RADIUS of CURVE | 1100 mm |
| TEST LOAD | 3 Ton |
| NET WEIGHT | 22 kg |
| BEAM WIDTH | 95 ~ 150 mm |



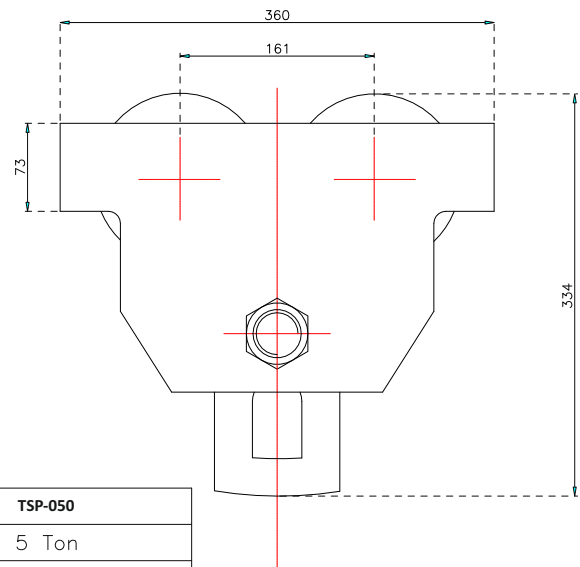
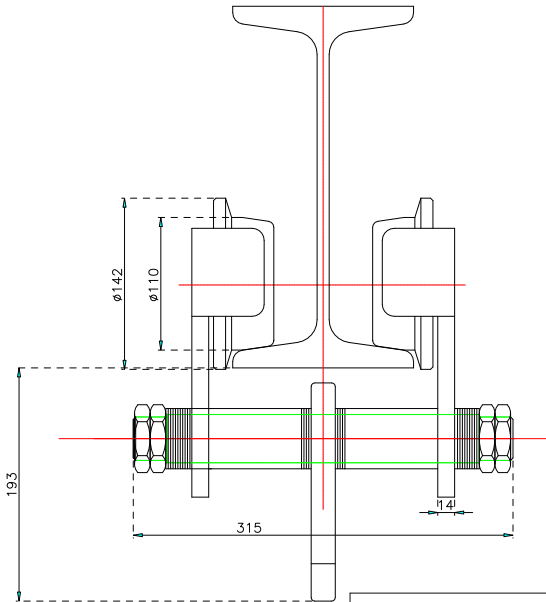
| | |
|----------------------|----------------|
| MODEL | TSP-030 |
| CAPACITY (Ton) | 3 Ton |
| Min. RADIUS of CURVE | 1300 mm |
| TEST LOAD | 4.5 Ton |
| NET WEIGHT (kg) | 30 |
| BEAM WIDTH(mm) | 97 ~ 153 mm |



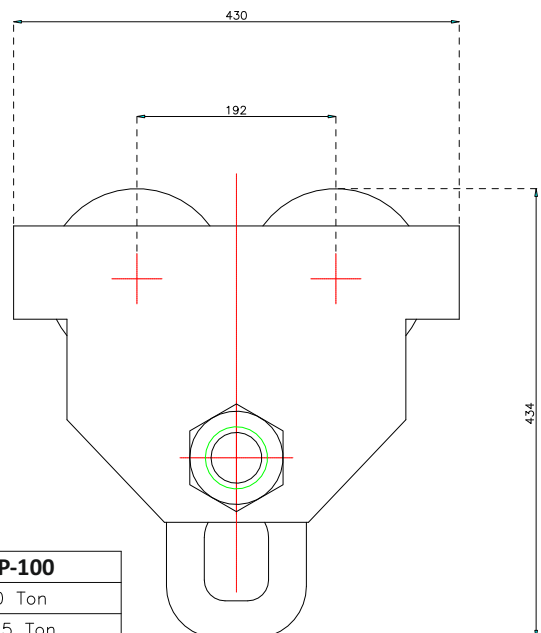
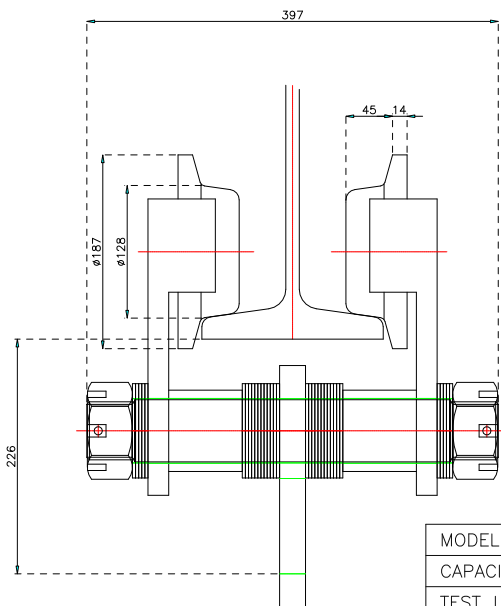
RIKEN

Specialized manufacturer of the best Plain/ Geared Trolley

TSP PLAIN TROLLEY



| | |
|----------------------|----------------|
| MODEL | TSP-050 |
| CAPACITY | 5 Ton |
| TEST LOAD | 7.5 Ton |
| Min, RADIUS of CURVE | 1400mm |
| NET WEIGHT | 55 kg |
| BEAM WIDTH | 120 ~ 175 mm |



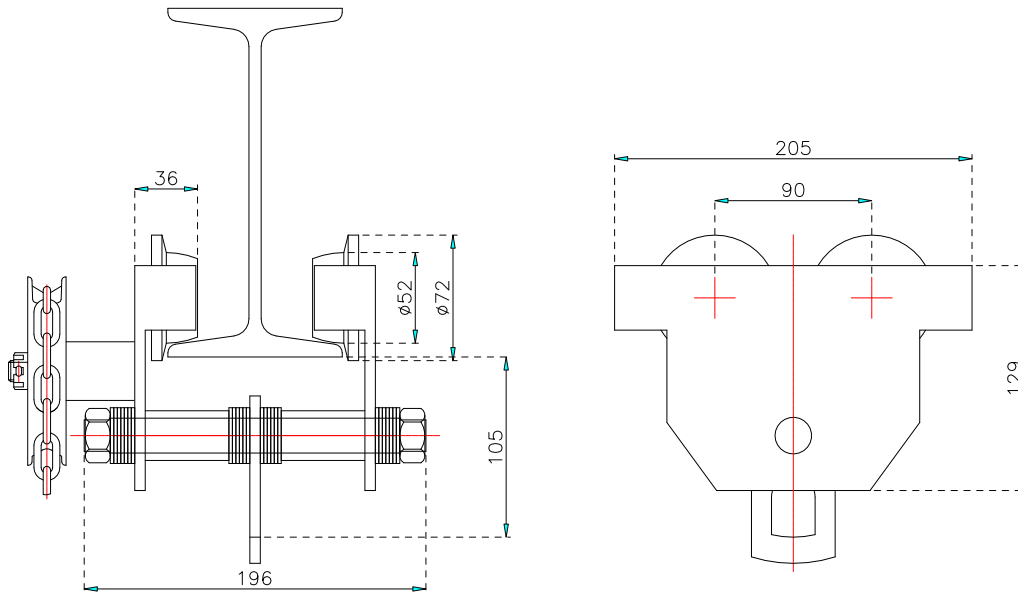
| | |
|----------------------|----------------|
| MODEL | TSP-100 |
| CAPACITY | 10 Ton |
| TEST LOAD | 12.5 Ton |
| Min, RADIUS of CURVE | 1700mm |
| NET WEIGHT | 93 kg |
| BEAM WIDTH | 125 ~ 203 mm |



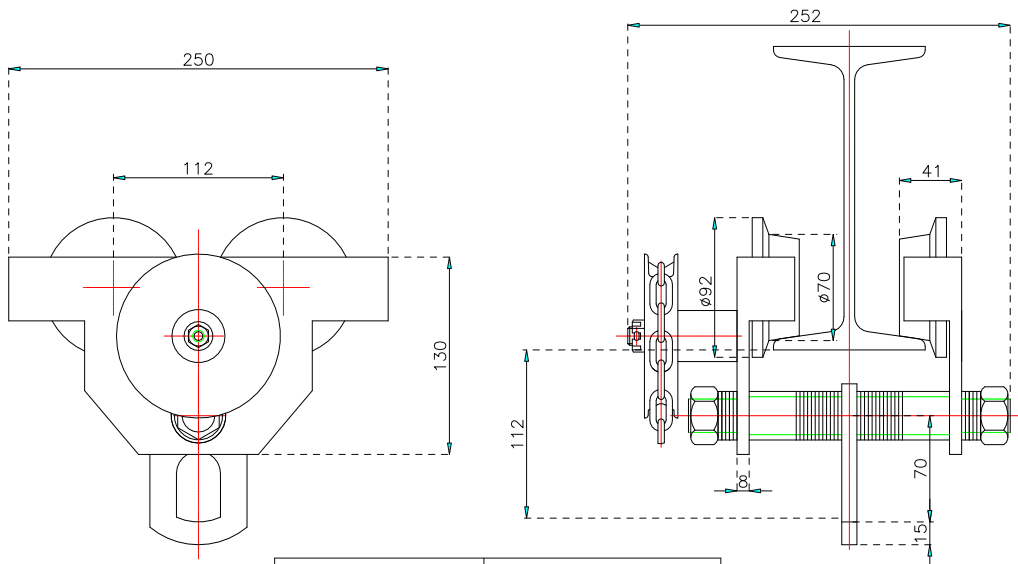
RIKEN

Specialized manufacturer of the best Plain/ Geared Trolley

TSG GEARED TROLLEY



| | |
|----------------------|---------------------|
| MODEL | TSG-005 |
| CAPACITY | 0.5 Ton |
| STANDARD LIFT (m) | 3m (STANDARD) |
| HAND CHAIN | ø5.0xP25mm (413g/m) |
| Min. RADIUS of CURVE | 900 mm |
| TEST LOAD | 0.75 Ton |
| NET WEIGHT | 10 kg |
| BEAM WIDTH | 78 ~ 133 mm |



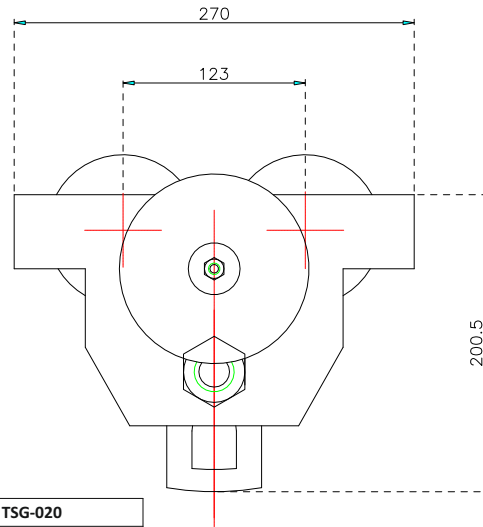
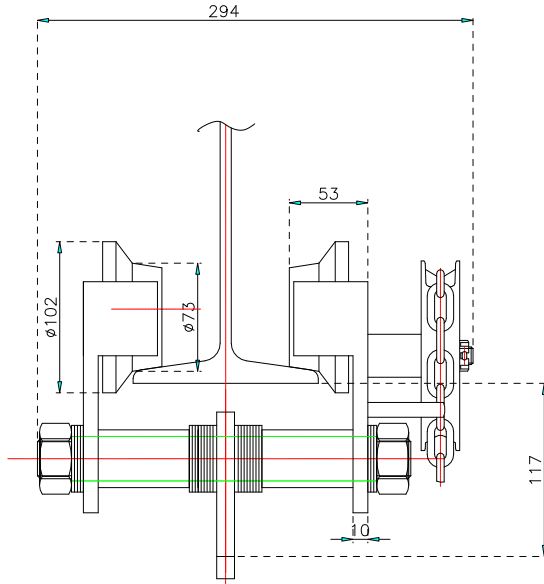
| | |
|----------------------|---------------------|
| MODEL | TSG-010 |
| CAPACITY | 1 Ton |
| STANDARD LIFT (m) | 3 m (STANDARD) |
| HAND CHAIN | ø5.0xP25mm (413g/m) |
| Min. RADIUS of CURVE | 1000 mm |
| TEST LOAD | 1.5 Ton |
| NET WEIGHT | 19 kg |
| BEAM WIDTH | 68 ~ 126 mm |



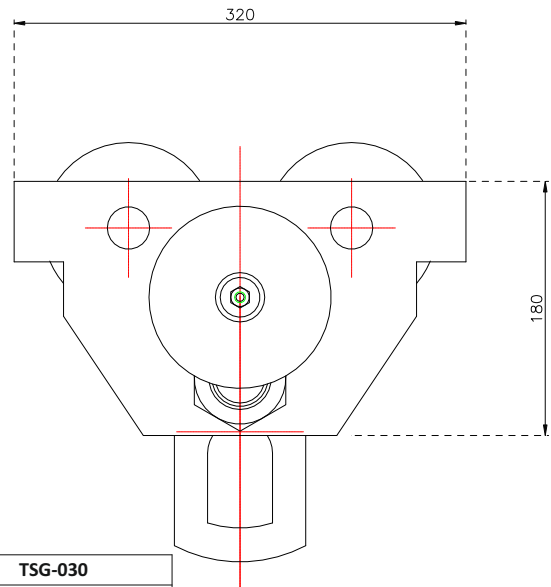
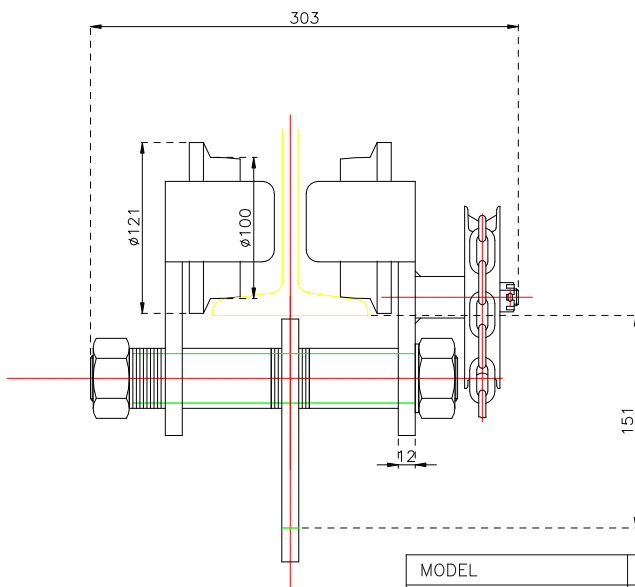
RIKEN

Specialized manufacturer of the best Plain/ Geared Trolley

TSG GEARED TROLLEY



| | |
|----------------------|---------------------|
| MODEL | TSG-020 |
| CAPACITY | 2 Ton |
| STANDARD LIFT (m) | 3 m (STANDARD) |
| HAND CHAIN | ø5.0xP25mm (413g/m) |
| Min. RADIUS of CURVE | 1100 mm |
| TEST LOAD | 3 Ton |
| NET WEIGHT | 29 kg |
| BEAM WIDTH | 95 ~ 150 mm |



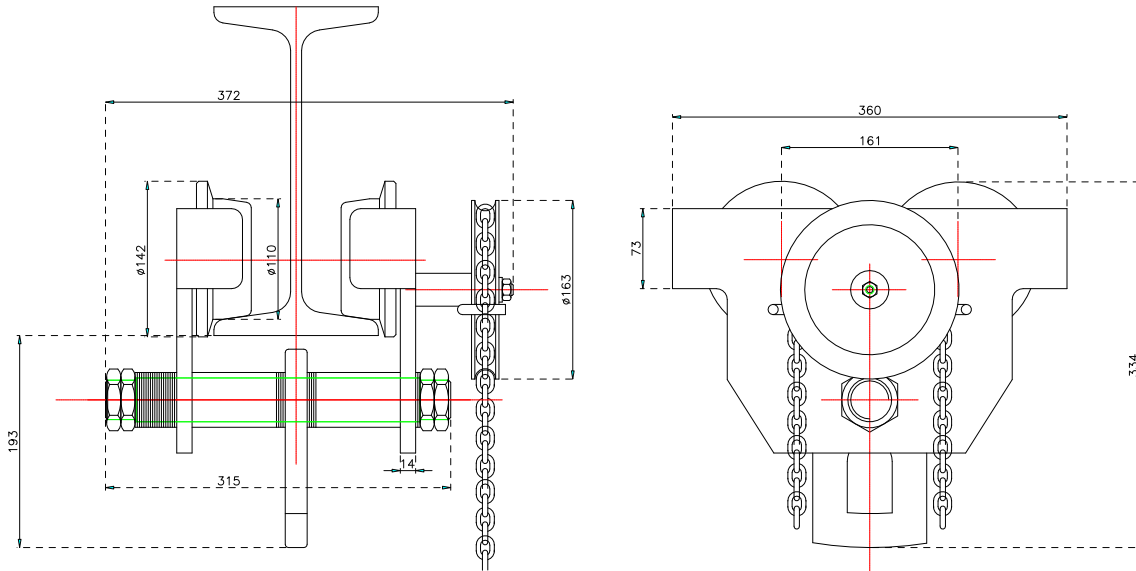
| | |
|----------------------|---------------------|
| MODEL | TSG-030 |
| CAPACITY (Ton) | 3 Ton |
| STANDARD LIFT (m) | 3.0 |
| HAND CHAIN | ø5.0xP25mm (413g/m) |
| Min. RADIUS of CURVE | 1300 mm |
| TEST LOAD | 4.5 Ton |
| NET WEIGHT (kg) | 40 |
| BEAM WIDTH(mm) | 97 ~ 153 mm |



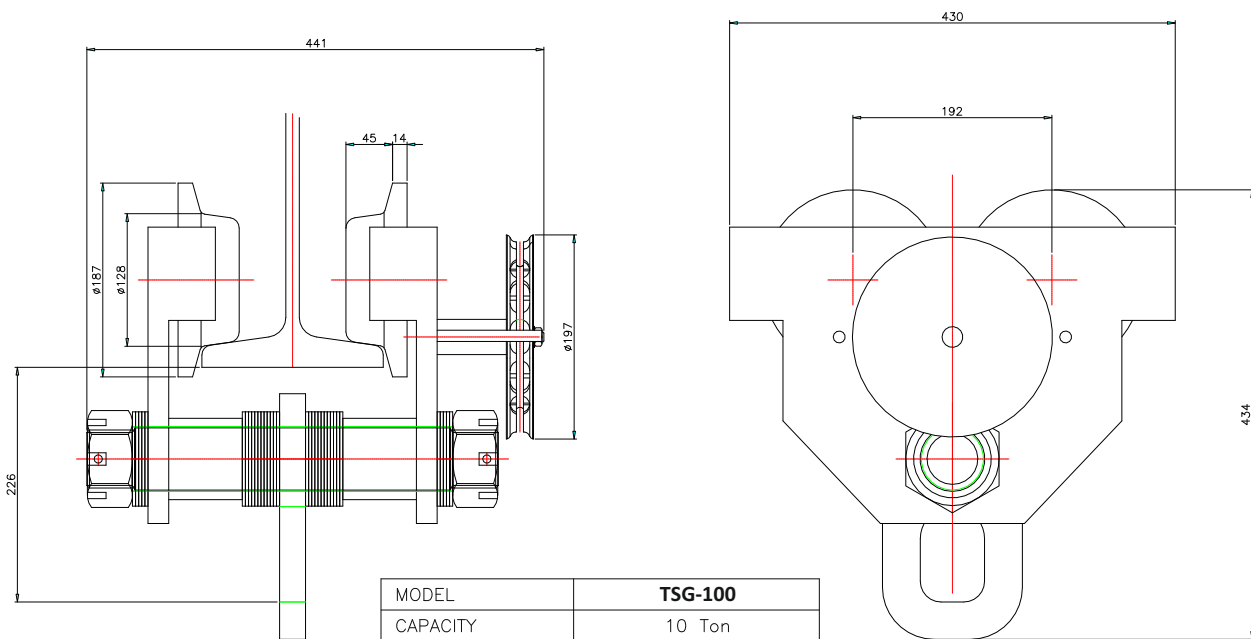
RIKEN

Specialized manufacturer of the best Plain/ Geared Trolley

TSG GEARED TROLLEY



| | |
|----------------------|---------------------|
| MODEL | TSG-050 |
| CAPACITY | 5 Ton |
| TEST LOAD | 7.5 Ton |
| HAND CHAIN | ø5.0xP25mm (413g/m) |
| Min, RADIUS of CURVE | 1400mm |
| NET WEIGHT | 65 kg |
| BEAM WIDTH | 120 ~ 175 mm |



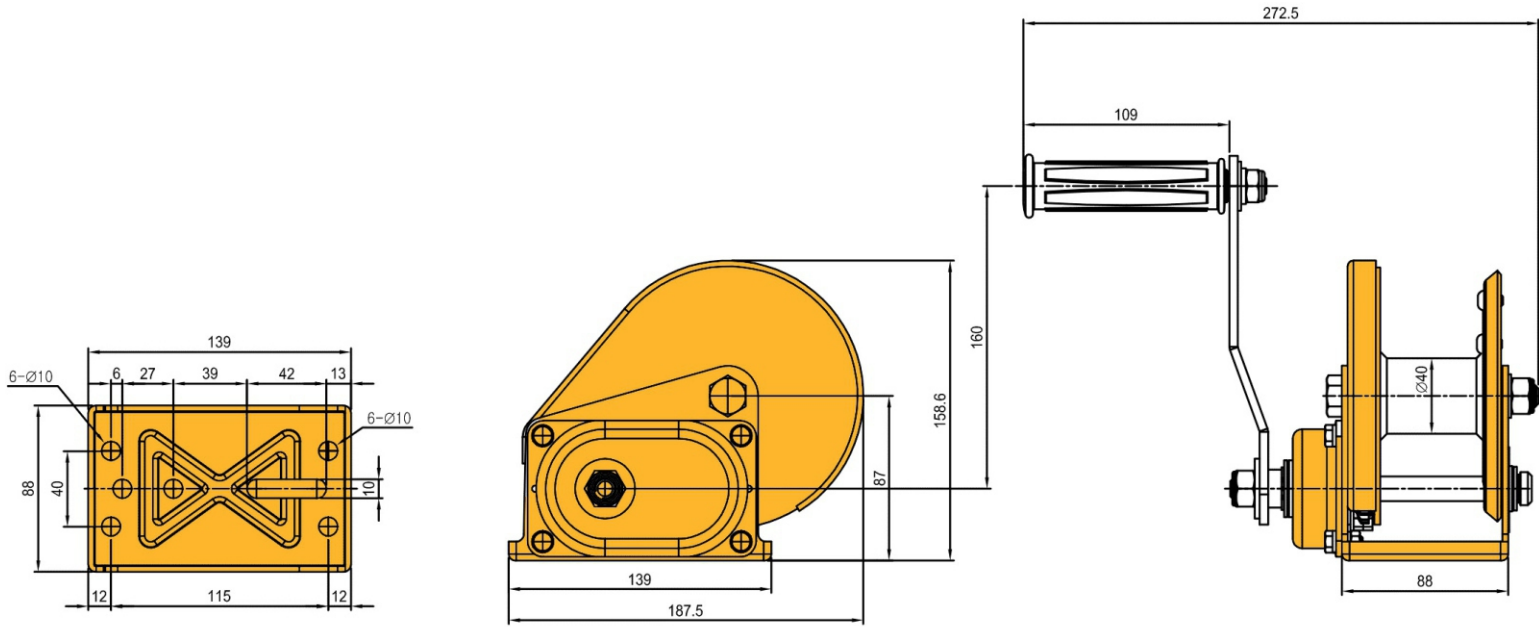
| | |
|----------------------|---------------------|
| MODEL | TSG-100 |
| CAPACITY | 10 Ton |
| TEST LOAD | 12.5 Ton |
| HAND CHAIN | ø5.0xP25mm (413g/m) |
| Min, RADIUS of CURVE | 1700mm |
| NET WEIGHT | 103 kg |
| BEAM WIDTH | 125 ~ 203 mm |



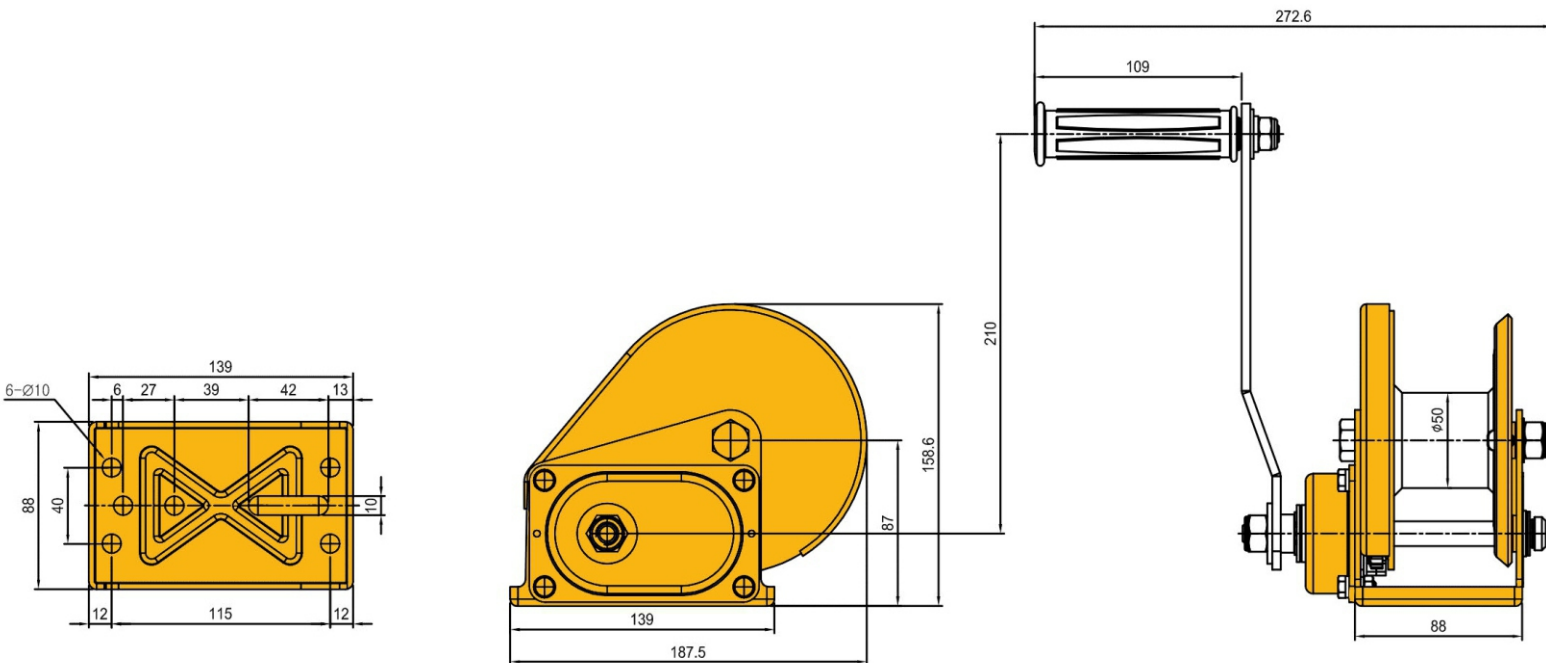
RIKEN

Specialized manufacturer of the best hand winch

HM BRAKE HAND WINCH



HM-800 / HM-800W / HM-800-SS / HM-800W-SS



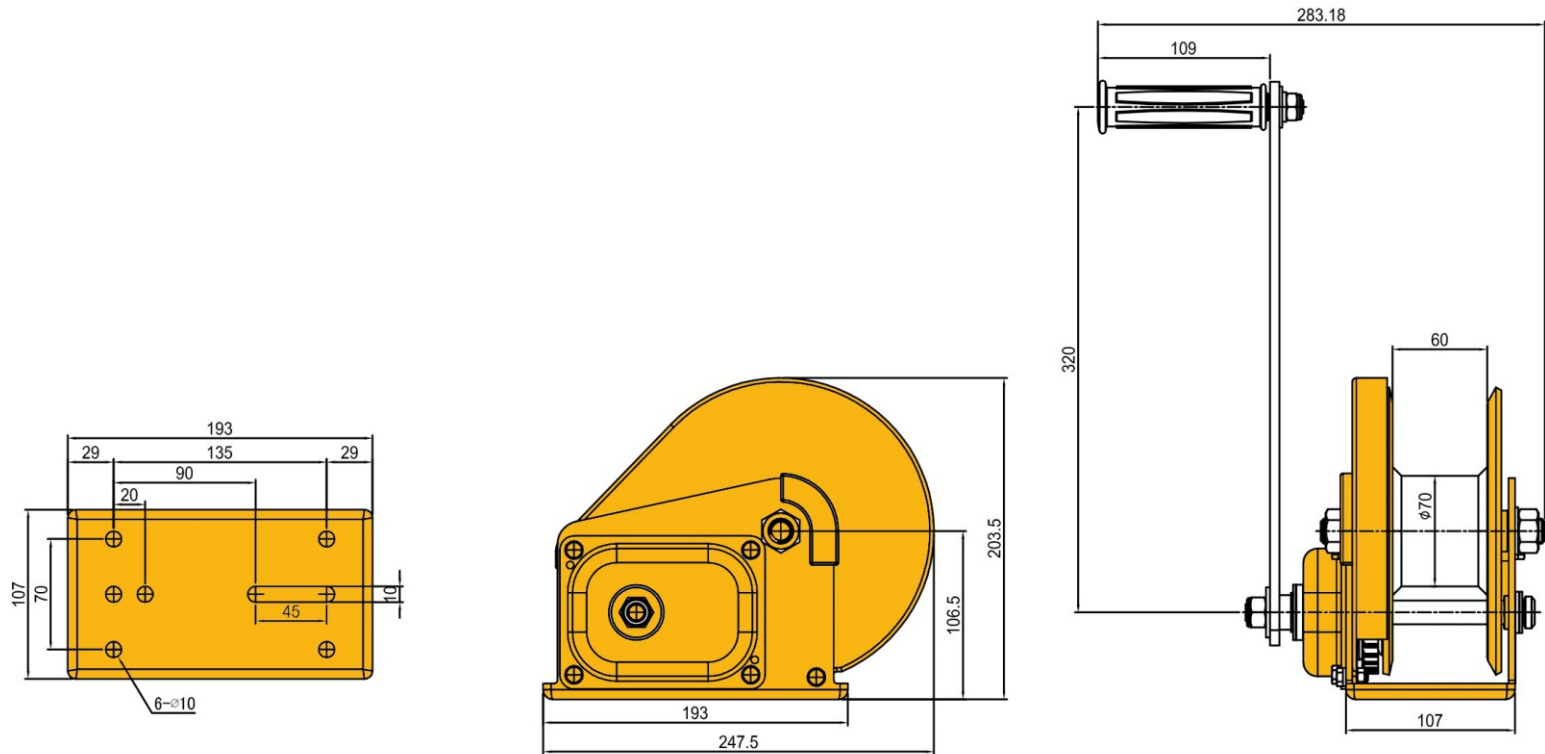
HM-1200 / HM-1200W / HM-1200-SS / HM-1200W-SS



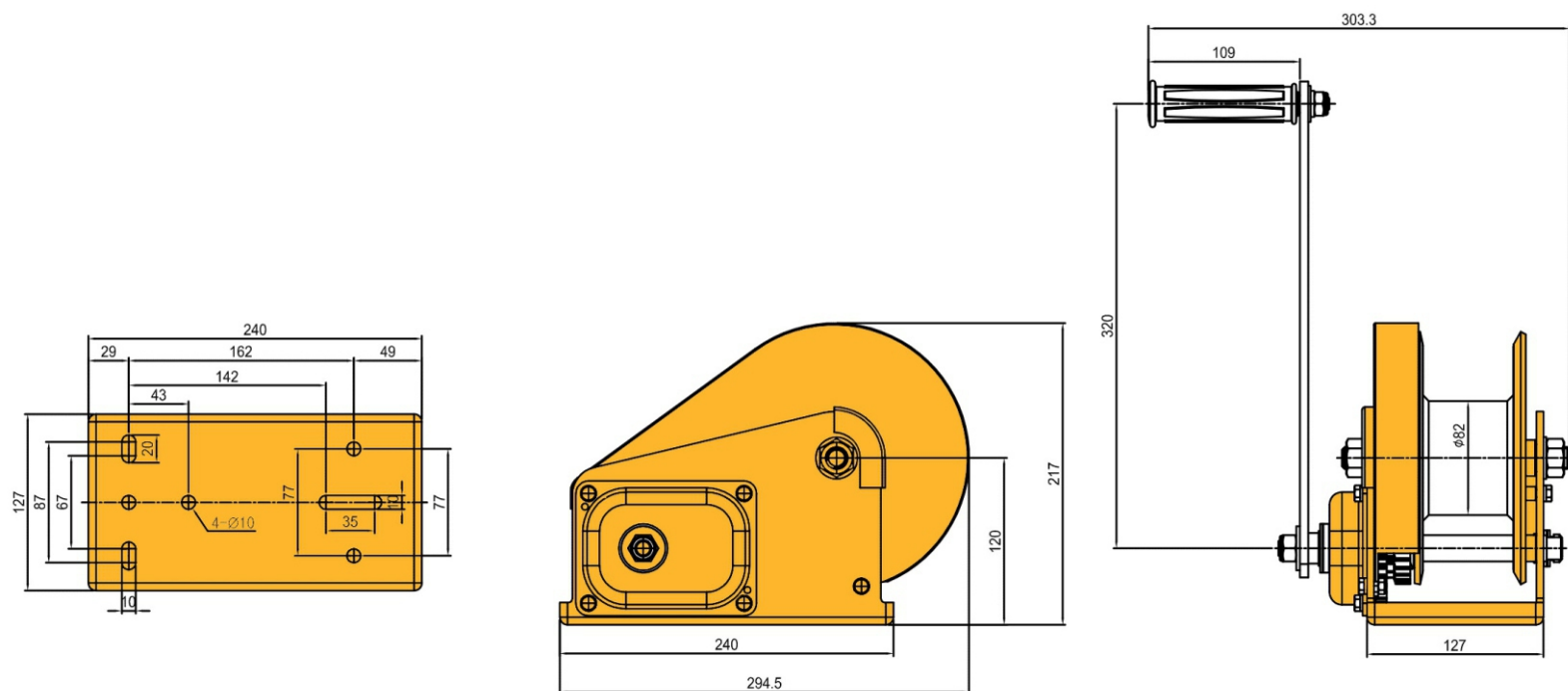
RIKEN

Specialized manufacturer of the best hand winch

HM BRAKE HAND WINCH



HM-1800 / HM-1800W / HM-1800-SS / HM-1800W-SS



HM-2600 / HM-2600W / HM-2600-SS / HM-2600W-SS



RIKEN

Specialized manufacturer of the best hand winch

HM BRAKE HAND WINCH

Specification

HM Type (Without Wire Rope)

| Product Code | Pulling Capacity / Lifting Capacity (kg) | Gear Ratio | Unit Weight (kg) |
|--------------|--|------------|------------------|
| HM-800 | 360/180 | 4.2/1 | 3.5 |
| HM-1200 | 540/270 | 4.2/1 | 3.7 |
| HM-1800 | 810/405 | 5/1 | 8.1 |
| HM-2600 | 1170/585 | 10/1 | 10.3 |

HM-W Type (With Wire Rope)

| Product Code | Pulling Capacity / Lifting Capacity (kg) | Gear Ratio | Unit Weight (kg) | Cable Diameter (mm/m) |
|--------------|--|------------|------------------|-----------------------|
| HM-800W | 360/180 | 4.2/1 | 3.5 | Ø6 x 8M |
| HM-1200W | 540/270 | 4.2/1 | 3.7 | Ø6 x 8M |
| HM-1800W | 810/405 | 5/1 | 8.1 | Ø6 x 15M |
| HM-2600W | 1170/585 | 10/1 | 10.3 | Ø6 x 30M |

HM-SS Type (Stainless Steel Without Wire Rope)

| Product Code | Pulling Capacity / Lifting Capacity (kg) | Gear Ratio | Unit Weight (kg) |
|--------------|--|------------|------------------|
| HM-800-SS | 360/180 | 4.2/1 | 3.5 |
| HM-1200-SS | 540/270 | 4.2/1 | 3.7 |
| HM-1800-SS | 810/405 | 5/1 | 8.1 |
| HM-2600-SS | 1170/585 | 10/1 | 10.3 |

HM-W-SS Type (Stainless Steel With Wire Rope)

| Product Code | Pulling Capacity / Lifting Capacity (kg) | Gear Ratio | Unit Weight (kg) | Cable Diameter (mm/m) |
|--------------|--|------------|------------------|-----------------------|
| HM-800W-SS | 360/180 | 4.2/1 | 3.5 | Ø6 x 8M |
| HM-1200W-SS | 540/270 | 4.2/1 | 3.7 | Ø6 x 8M |
| HM-1800W-SS | 810/405 | 5/1 | 8.1 | Ø6 x 15M |
| HM-2600W-SS | 1170/585 | 10/1 | 10.3 | Ø6 x 30M |

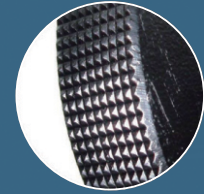


RIKEN

Specialized manufacturer of the best Horizontal Lifter

RMS 型

軽く、強く、使いやすく。
鉄骨建方作業用クランプ



※傷が目立たない
ローレット仕様もございます

鉄鋼用クランプ 横つり用クランプ



鉄鋼用クランプ 横つり用クランプ

■ 用途

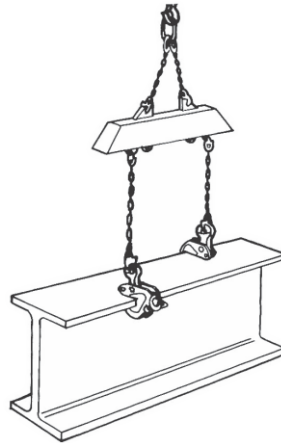
横つり・水平つり・建方・運搬・引き起こし引き倒し・溶接・組立・搭載プレス加工 ベンディング加工
反転装置等の使用による

■ 適用部材

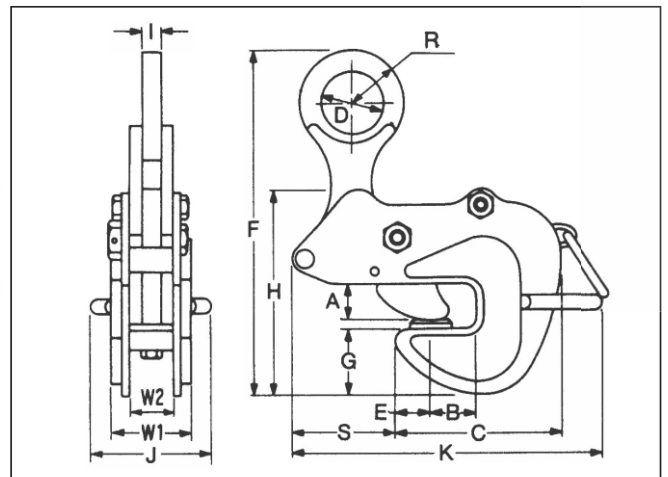
形鋼(H形鋼・I形鋼・溝形鋼)・鉄骨・橋梁・鉄鋼構造物・鋼板・鋼製梁・鋼製柱・造船用ロンジ材・クレーンビーム・鏡板・パイ等

■ 特長

- 確実に効くラッチ式ロック装置(スプリング式締め付け機構)
- つり荷重による強力自動締め付け機構
グリップ力はつり荷重に比例
- 高周波焼き入れ済みの特殊合金鋼製カム
- クラックに強い溶接構造の高抗張力鋼製本体
- つり荷をガッチリつかむ丸型旋回アゴ
- 取扱いやすい大型のつり環
- 作業性を高める取手付き
- 使いやすい軽量型



仕様寸法図



★ご使用前に必ず取扱説明書をよくお読みください

■ RMS型寸法表

| 型式 | 使用荷重 最小~最大(kg) | 有効板厚 (mm) | 寸法(mm) | | | | | | | | | | | | | | 製品質量 (kg) | |
|---------|-------------------|--------------|--------|----|-----|----|----|---------|----|-----|----|-----|-----|-----|----|----|--------------|------|
| | | | A | B | C | D | E | F | G | H | I | J | K | S | R | W1 | | W2 |
| RMS-0.5 | 500 | 0~25 | 23 | 30 | 116 | 25 | 26 | 180~215 | 41 | 135 | 12 | 110 | 232 | 76 | 25 | 65 | 28 | 3.2 |
| RMS-1 | 1000 | 0~25 | 28 | 35 | 129 | 50 | 27 | 221~262 | 46 | 155 | 16 | 114 | 257 | 80 | 40 | 66 | 34 | 5.3 |
| RMS-2 | 2000 | 0~30 | 33 | 40 | 146 | 56 | 35 | 254~297 | 60 | 175 | 18 | 114 | 268 | 72 | 45 | 76 | 40 | 7.9 |
| RMS-3 | 3000 | 0~38 | 41 | 45 | 165 | 50 | 35 | 282~324 | 70 | 200 | 18 | 114 | 305 | 90 | 45 | 76 | 40 | 10.5 |
| RMS-5 | 5000 | 0~40 | 45 | 45 | 205 | 60 | 45 | 345~398 | 75 | 238 | 28 | 152 | 388 | 117 | 55 | 87 | 59 | 27.6 |

※印の納期については、その都度お問い合わせください。

◎印は受注生産品：価格、納期については、その都度お問い合わせください。



RIKEN

Specialized manufacturer of the best Beam Clamp

BEAM CLAMP

▪ R-BC Type

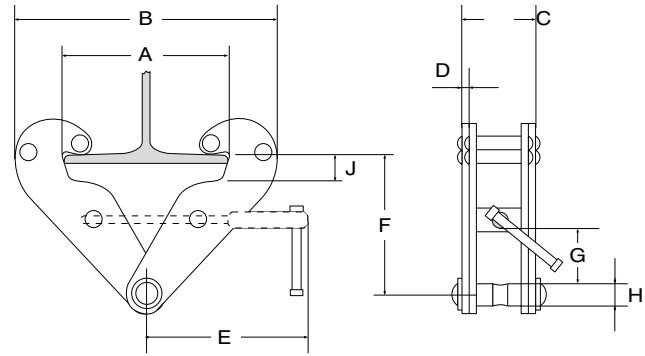
For safe lifting and moving of steel beams or as a fixed suspension point.

Properties

- Low constructional height.
- Easy mounting due to the spindle.
- Suitable for both IPE or INP steel beams.
- Safetyfactor: 4 x rated load capacity.
- Allen screw for extra safety.

Norm:

- EN12100-1/2, EN13155, AS4991, ASME-B30,20



| Model | Wll (kg) | Jaw opening (mm) | a max (mm) | B max (mm) | B min (mm) | c (mm) | D (mm) | e (mm) | F max (mm) | F min (mm) | G (mm) | H (mm) | J (mm) | Weight (kg) |
|---------|----------|------------------|------------|------------|------------|--------|--------|--------|------------|------------|--------|--------|--------|-------------|
| R-BC-1 | 1000 | 80 - 240 | 270 | 370 | 183 | 94 | 4 | 198 | 154 | 100 | 22 | 21 | 23 | 4 |
| R-BC-2 | 2000 | 80 - 240 | 270 | 370 | 183 | 102 | 6 | 198 | 154 | 100 | 22 | 21 | 23 | 5 |
| R-BC-3 | 3000 | 90 - 330 | 355 | 500 | 243 | 132 | 8 | 263 | 219 | 148 | 46 | 23 | 35 | 8 |
| R-BC-5 | 5000 | 90 - 330 | 355 | 500 | 243 | 142 | 10 | 263 | 219 | 148 | 43 | 29 | 35 | 11.5 |
| R-BC-10 | 10000 | 90 - 350 | 364 | 521 | 269 | 180 | 12 | 285 | 239 | 165 | 51 | 39 | 35 | 16.5 |

▪ R-BCO Type

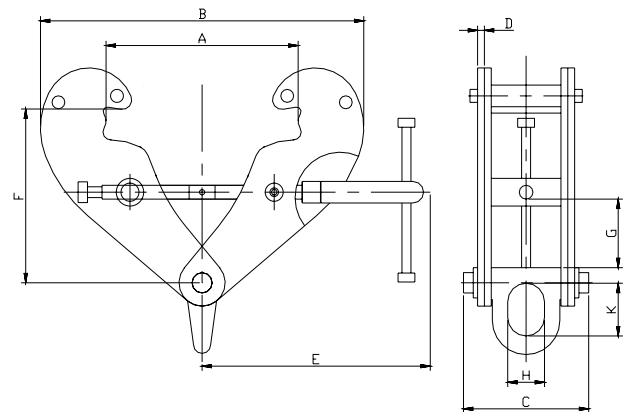
For lifting and transportation of beams or as fixed suspension points.

Properties

- Equipped with suspension eye.
- Locking spindle by means of Allen screw for extra safety.
- Easy assembly by spindle.
- Suitable for IPE and INP bars.
- Safety factor 4 x WLL.

Norm:

- EN12100-1/2, EN13155, AS4991, ASME-B30,20



| Type | Wll (kg) | Jaw opening (mm) | a max (mm) | B min (mm) | B max (mm) | c (mm) | D (mm) | e (mm) | F max (mm) | F min (mm) | G (mm) | H (mm) | K (mm) | Weight (kg) |
|----------|----------|------------------|------------|------------|------------|--------|--------|--------|------------|------------|--------|--------|--------|-------------|
| R-BCO-1 | 1000 | 80-245 | 270 | 183 | 370 | 94 | 4 | 218 | 100 | 154 | 18 | 28 | 43 | 4.0 |
| R-BCO-2 | 2000 | 80-245 | 270 | 183 | 370 | 102 | 6 | 218 | 100 | 154 | 18 | 28 | 43 | 5.0 |
| R-BCO-3 | 3000 | 90-330 | 355 | 243 | 500 | 132 | 8 | 276 | 148 | 219 | 40 | 43 | 60 | 10.0 |
| R-BCO-5 | 5000 | 90-330 | 355 | 243 | 500 | 142 | 10 | 276 | 148 | 219 | 40 | 43 | 60 | 12.0 |
| R-BCO-10 | 10000 | 90-340 | 364 | 269 | 521 | 180 | 12 | 301 | 165 | 239 | 47 | 62 | 91 | 18.5 |



RIKEN

Specialized manufacturer of the best Wire Rope Pulling Hoist

RX WIRE ROPE WINCH

The Riken Tirfor is a very robust wire rope hoist that can be used vertically, horizontally or at other angles, with a capacity of 800 kg, 1600 kg, 3200 kg and 5400 kg. The shear pin and lever are reliable indicators for overloading.

Standard delivery

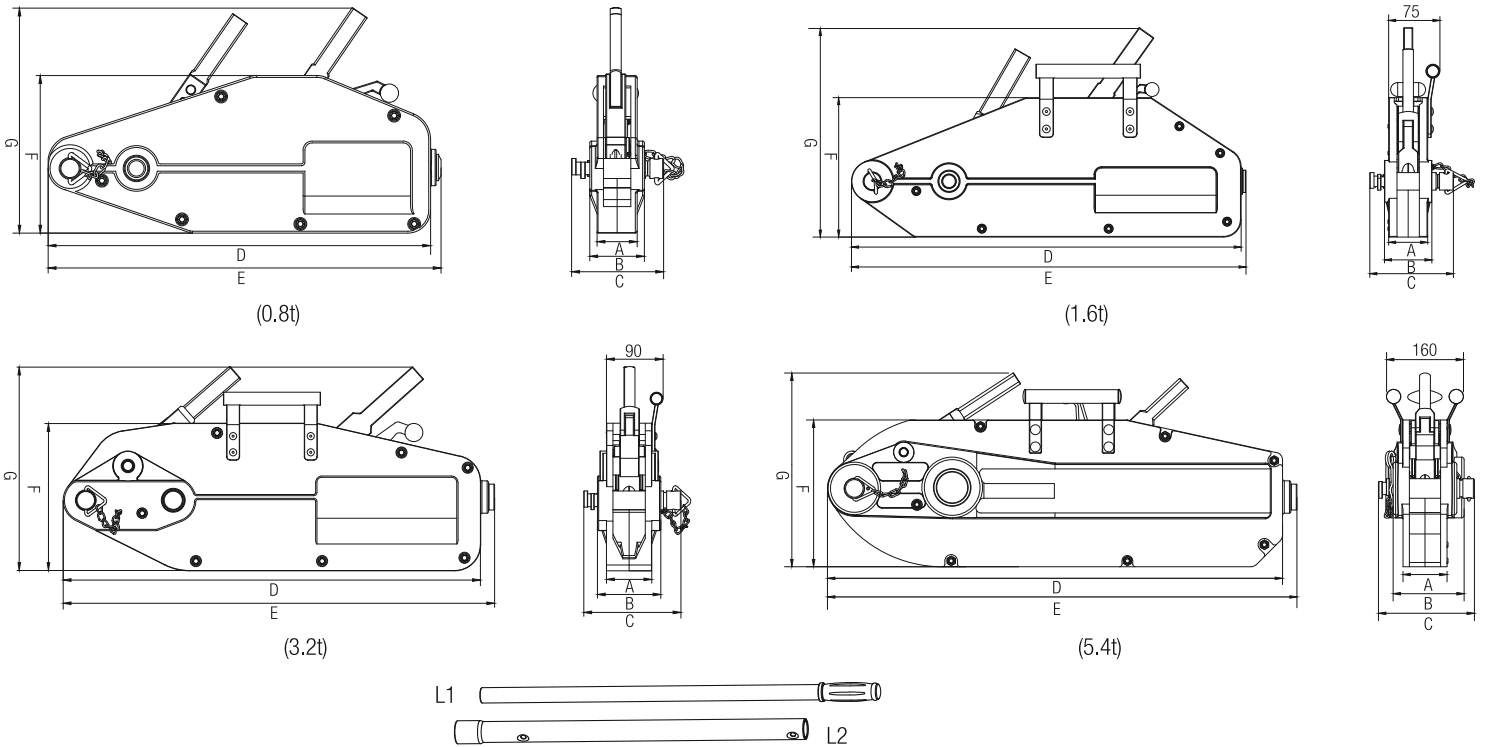
- Excluding wire rope.

Option

- Steel wire rope, standard length is 20 meters.

Norm:

- EN12100-1/2, EN13157, EN13414, EN121385



WIRE ROPE WINCH

| Model | | RX-800 | RX-1600 | RX-3200 | RX-5400 |
|------------------------------|----|--------|---------|---------|---------|
| Rated Lifting Capacity | t | 0.8 | 1.6 | 3.2 | 5.4 |
| Rated Pulling Capacity | t | 1.2 | 2.4 | 4.8 | 8.1 |
| Rated Forward Handpower | n | 343 | 400 | 441 | 745 |
| Rated Forward Travel | mm | ≥52 | ≥55 | ≥28 | ≥30 |
| Rope Diameter | mm | 8.3 | 11 | 16 | 20 |
| Standard length of wire rope | m | 20 | 20 | 20 | 20 |
| Max. Travelling Load | kg | 1200 | 2400 | 4800 | 8000 |
| Net weight without cable | kg | 6.7 | 12.3 | 22.2 | 56.5 |
| Max Overall Size (mm) | A | 44 | 56 | 70 | 90 |
| | B | 60 | 68 | 98 | 160 |
| | C | 101 | 120 | 150 | 200 |
| | D | 420 | 545 | 645 | 935 |
| | E | 430 | 556 | 666 | 940 |
| | F | 172 | 200 | 227 | 300 |
| | G | 240 | 270 | 320 | 410 |
| L1 (cm) | | 80 | 80 | 80 | 88 |
| L2 (cm) | | | 120 | 120 | 135 |