

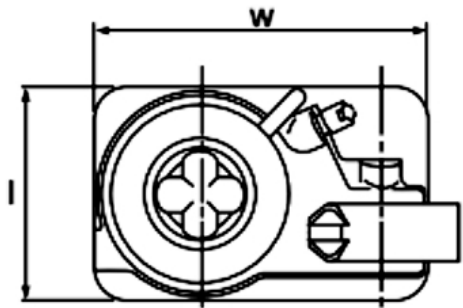
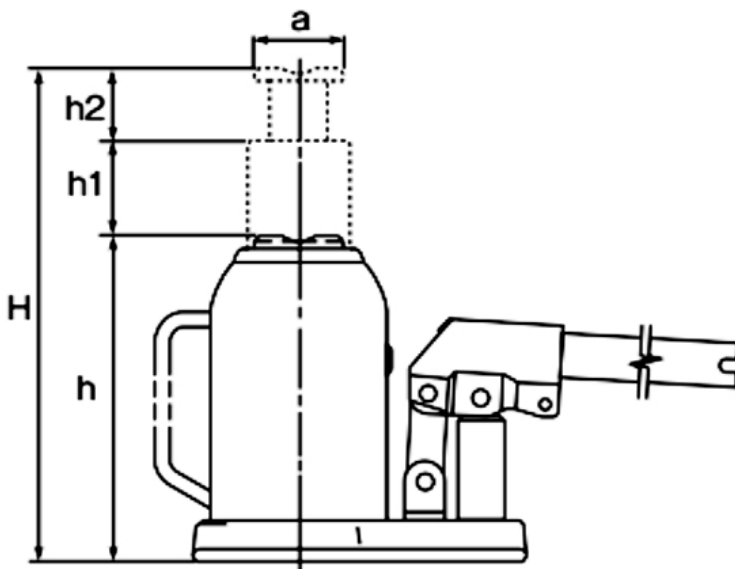


RIKEN

Specialized manufacturer of the best Hydraulic Jack

BOTTLE JACK

- * Made in Japan
- * Welded construction throughout.
- * Riken hydraulic jacks are light and durable.
- * Widely used in various fields such as machinery construction and automotive industry.
- * All models work both in vertical and horizontal positions.
- * All models have common release stem and valve assemblies many other parts are also interchangeable from model to model.



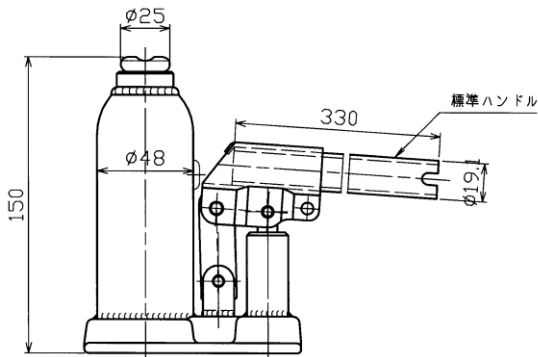
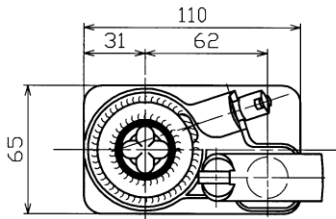
Model	Capacity	Min Height (h)	Lifting Height (h1)	Extension Screw (h2)	Max Height (H)	Saddle Dimensions (a)	Base Dimensions (l x w)	Gross mass
	Ton	mm	mm	mm	mm	mm	mm	
RS-2S	2	150	85	50	285	25	65x110	2.2
RS-2	2	180	115	50	345	25	65x110	2.4
RS-3	3	190	115	60	365	29.5	72x115	2.7
RN-4	4	190	115	70	375	34	76x131	4.0
RS-5Y	5	200	120	70	390	34	76x131	3.7
RH-5	5	200	120	70	390	35x36.5	82x142	4.6
RH-7	7	200	120	70	390	38x40	90x151	5.6
RH-10	10	240	150	80	470	45x47	106x166	7.9
RH-15	15	265	165	80	510	51x53	118x180	10.5
RH-20	20	270	160		430	52	128x182	13.1
RH-30Y	30	280	160		440	61	142x192	18.8
RH-30V-2	30	280	160		440	61	142x192	18.9
RH-50Y	50	305	170		475	80	188x237	37.0
RH-100Y	100	305	145		450	125	265x318	87.7
RHB-10	10	170	95	75	340	45x47	106x166	6.3
RHB-15	15	170	90	70	330	51x53	118x180	7.9
RHB-20	20	180	85	40	305	56.5x58	128x182	9.8
RHB-30Y	30	180	80		260	61	142x192	13.7



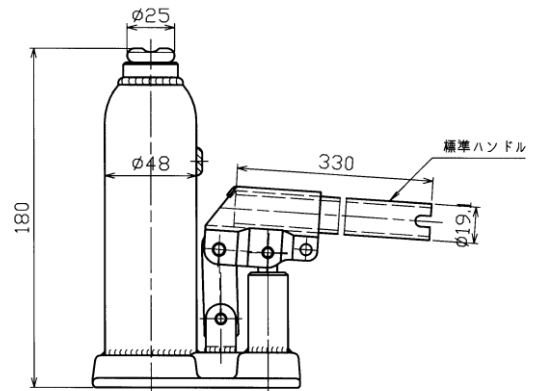
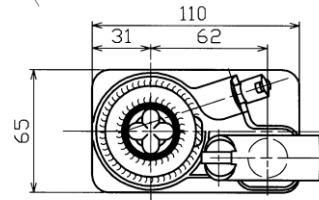
RIKEN

Specialized manufacturer of the best Hydraulic Jack

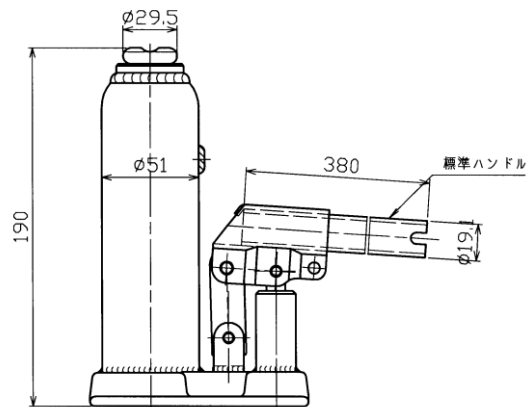
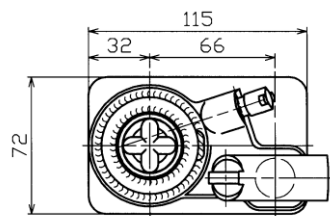
BOTTLE JACK



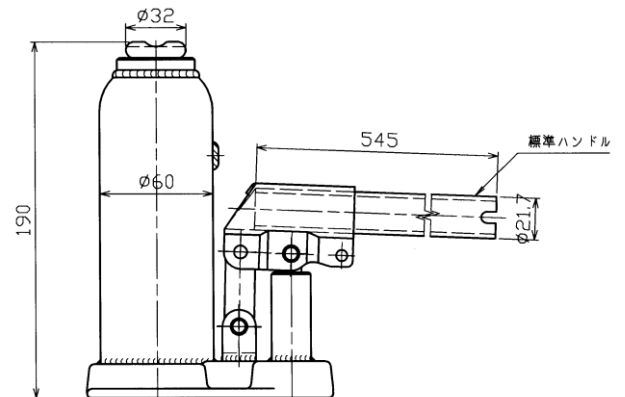
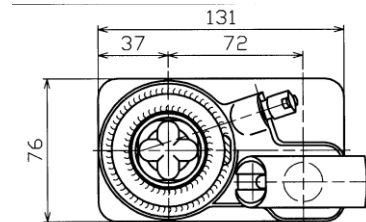
RS-2S



RS-2



RS-3



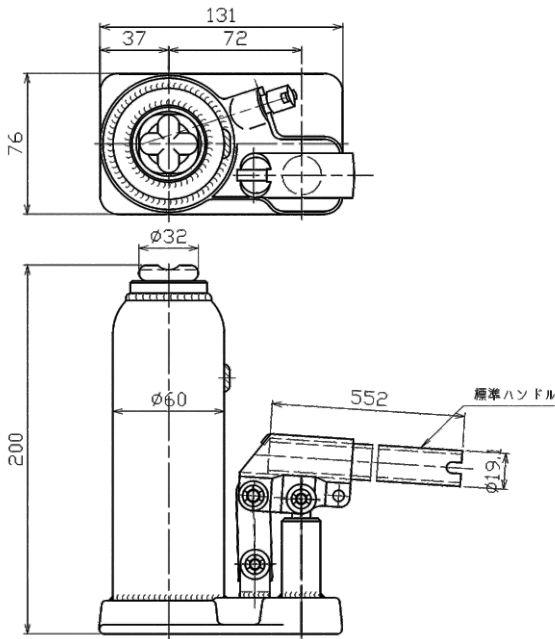
RN-4



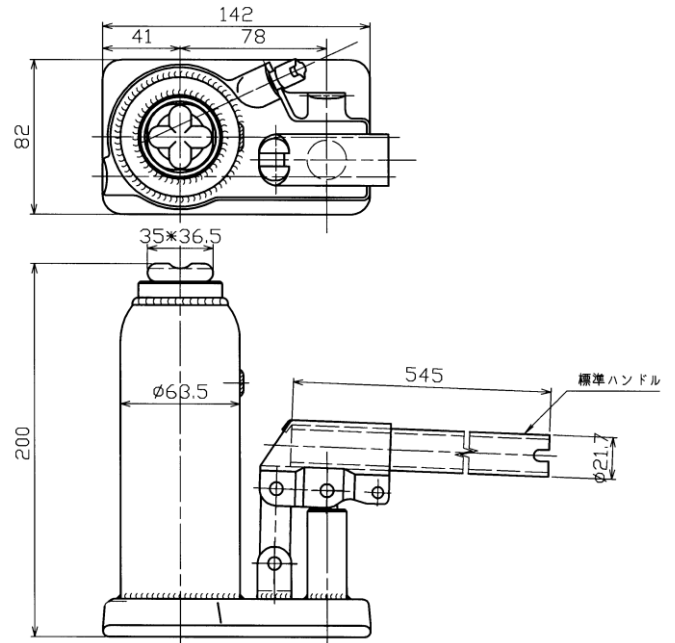
RIKEN

Specialized manufacturer of the best Hydraulic Jack

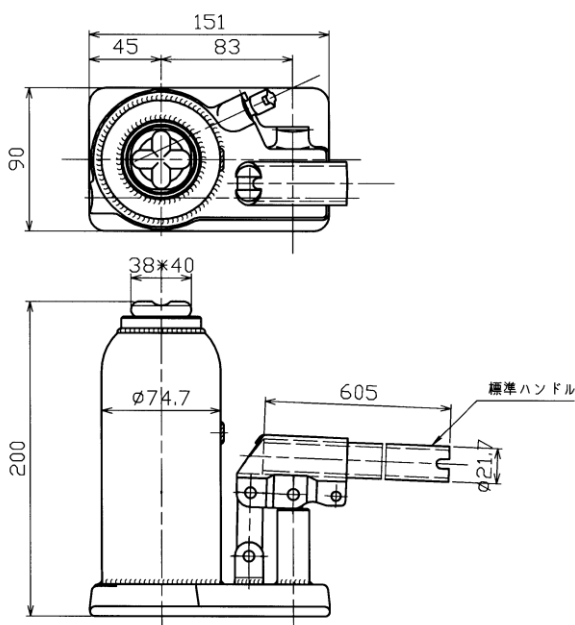
BOTTLE JACK



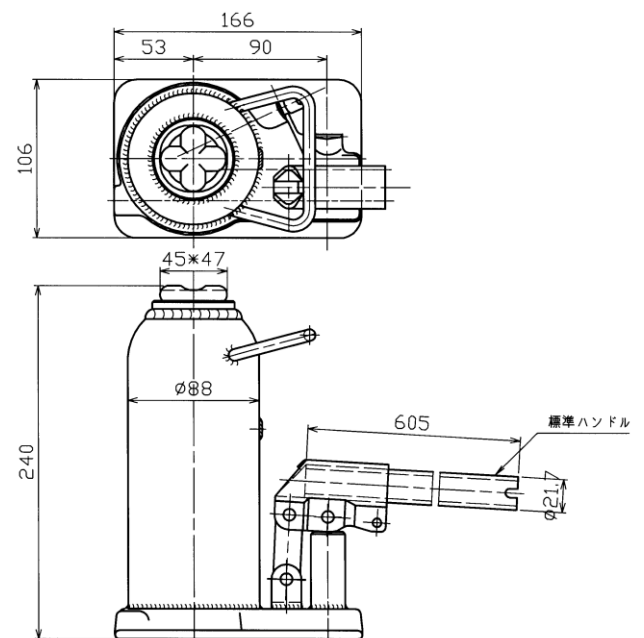
RS-5Y



RH-5



RH-7



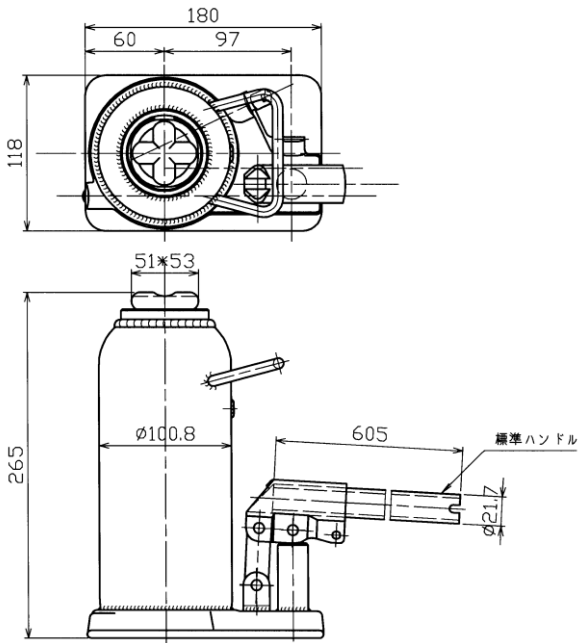
RH-10



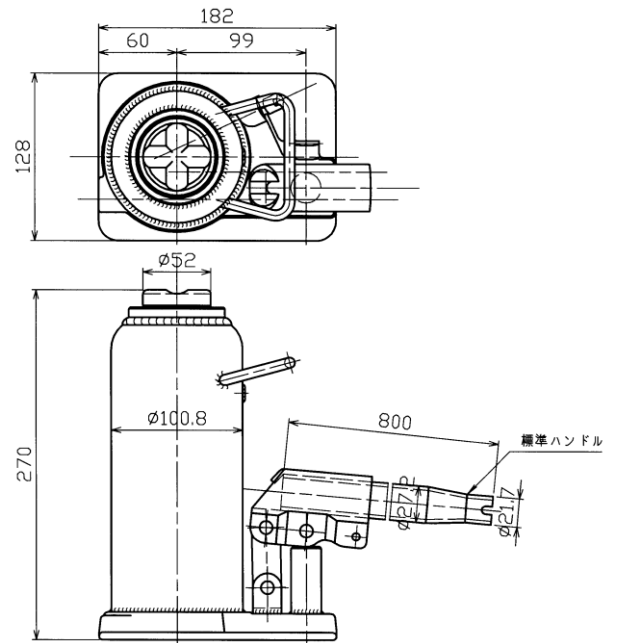
RIKEN

Specialized manufacturer of the best Hydraulic Jack

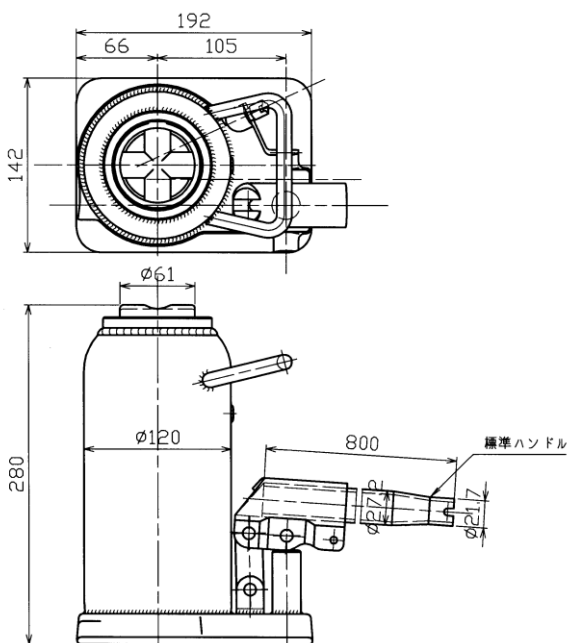
BOTTLE JACK



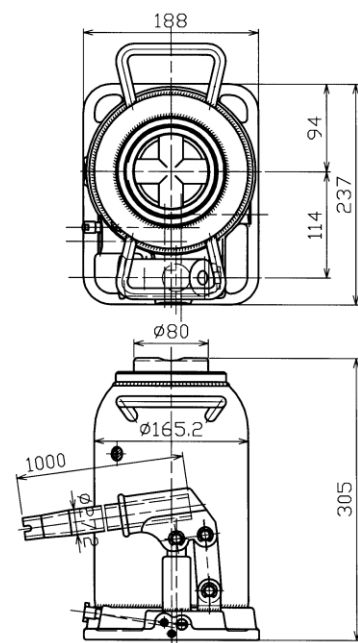
RH-15



RH-20



RH-30Y



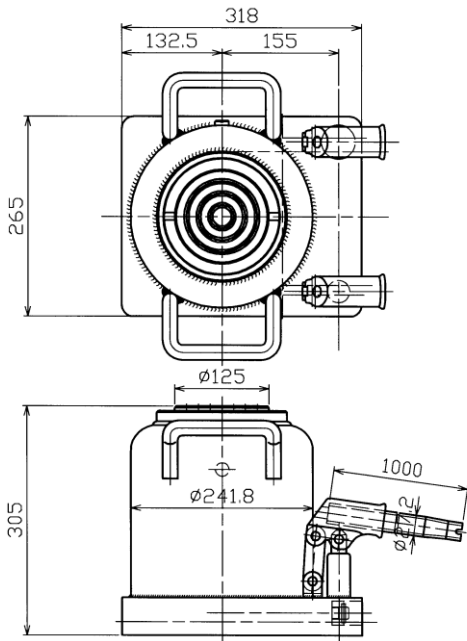
RH-50Y



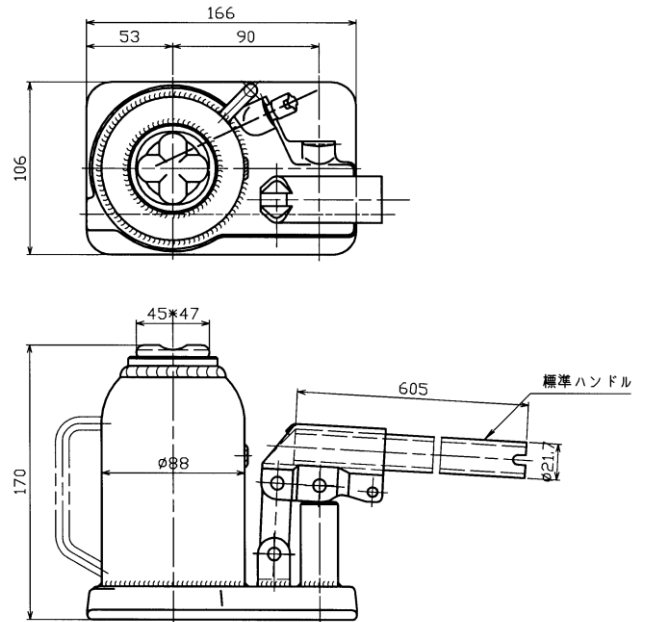
RIKEN

Specialized manufacturer of the best Hydraulic Jack

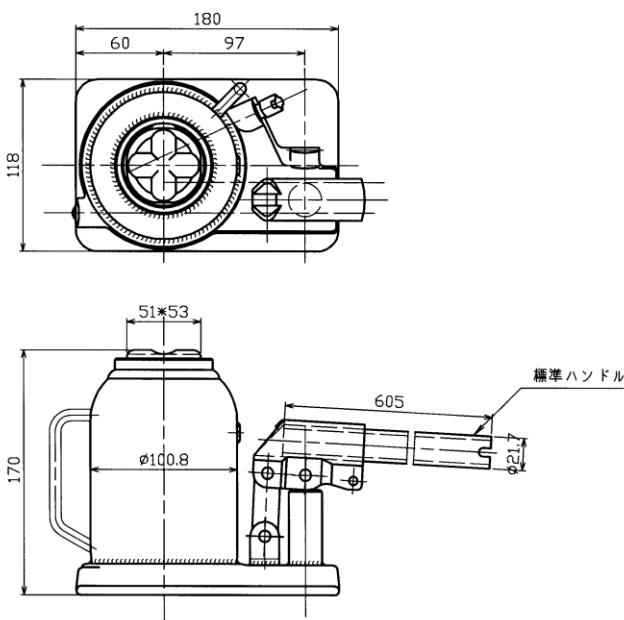
BOTTLE JACK



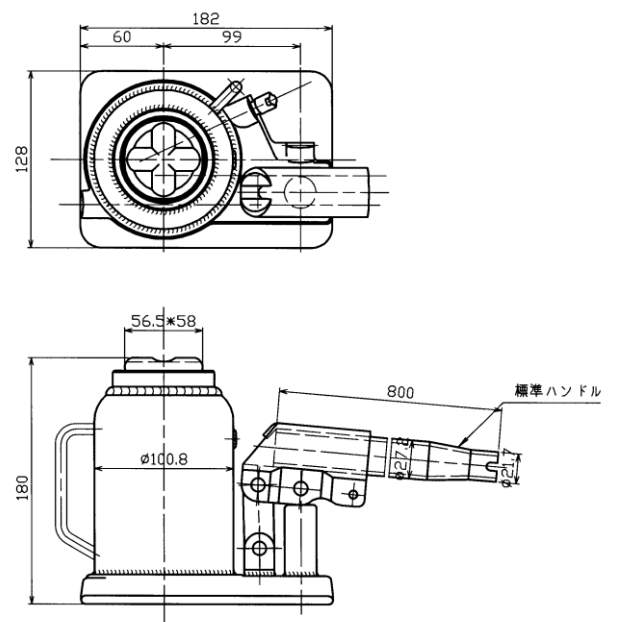
RH-100Y



RHB-10



RHB-15



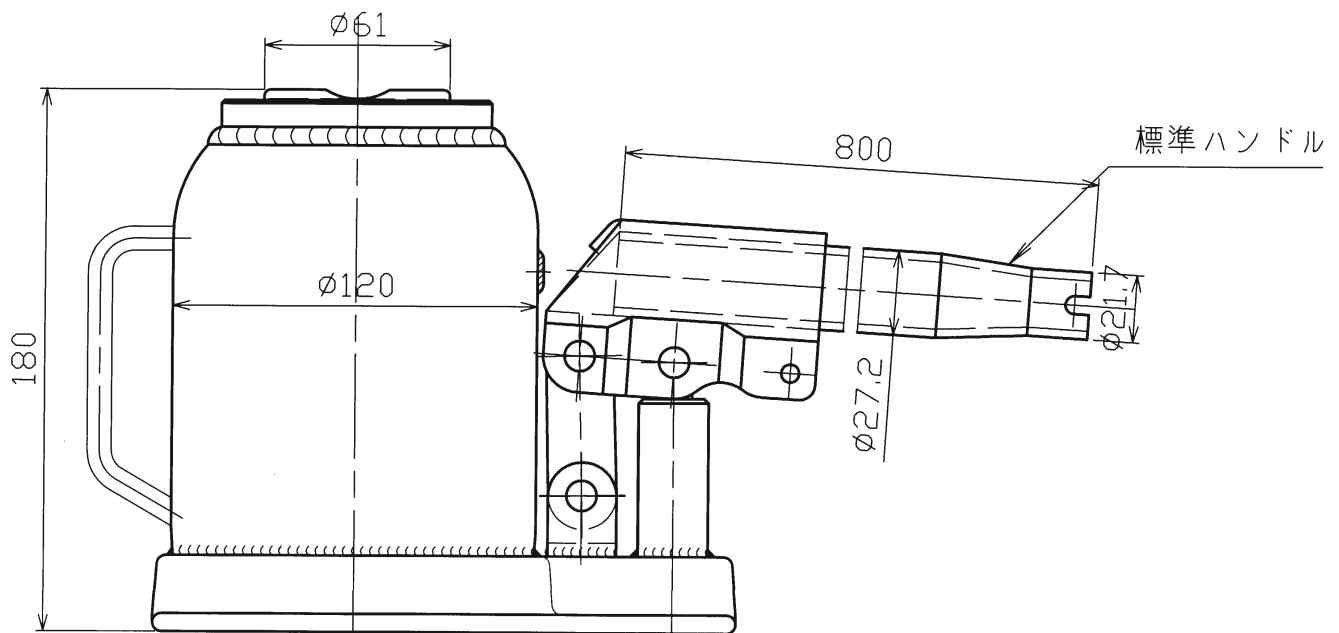
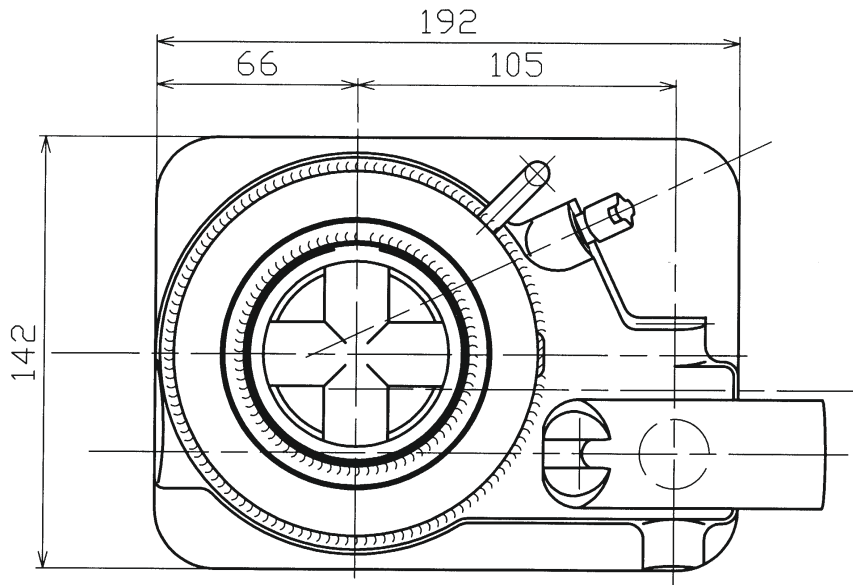
RHB-20



RIKEN

Specialized manufacturer of the best Hydraulic Jack

BOTTLE JACK



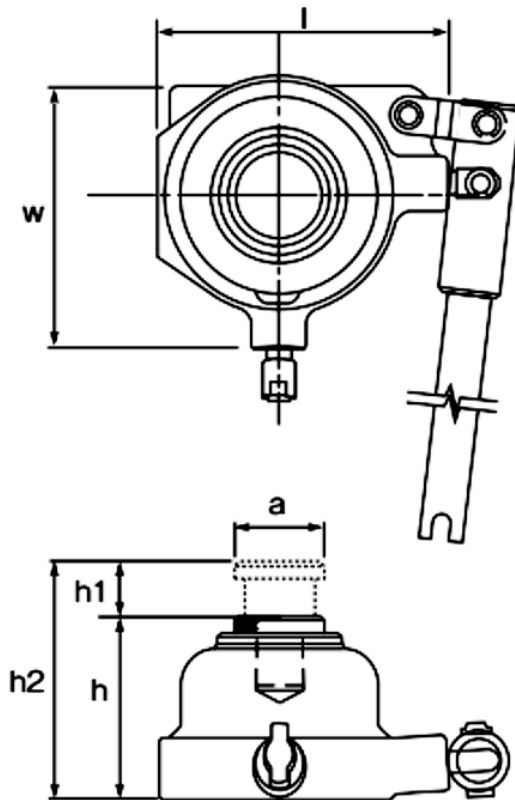
RHB-30Y



RIKEN

Specialized manufacturer of the best Hydraulic Jack

RMJ MINI JACK



(付属ピン型アダプター)
Pin-type adapter accessory

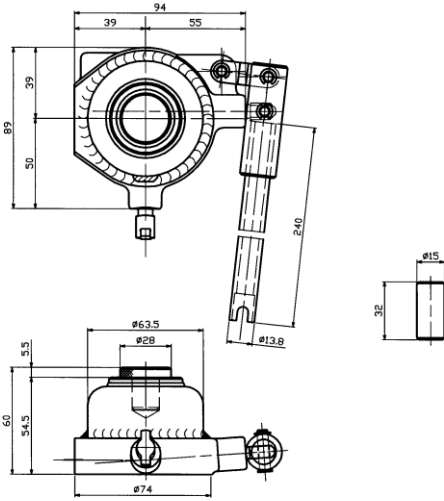
Model	Capacity	Min Height (h)	Lifting Height (h1)	Extension Screw (h2)	Max Height (H)	Saddle Dimensions (a)	Base Dimensions (l x W)	Gross mass
	Ton	mm	mm	mm	mm	mm	mm	Kg
RMJ-5C	5	60	20		80	28	94x89	1.7
RMJ-5T	5	85	40		125	28	94x89	2.0
RMJ-10	10	120	30		150	42	102x108	4.4
RMJ-20	20	130	30		160	53	112x119	7.5
RMJ-50Y	50	140	30		170	80	174x178	18.0



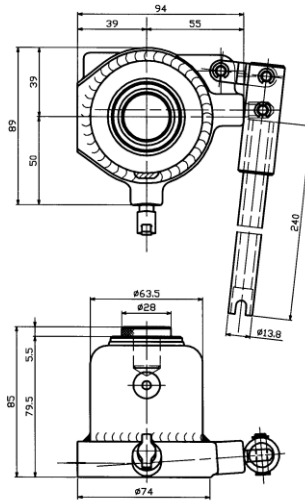
RIKEN

Specialized manufacturer of the best Hydraulic Jack

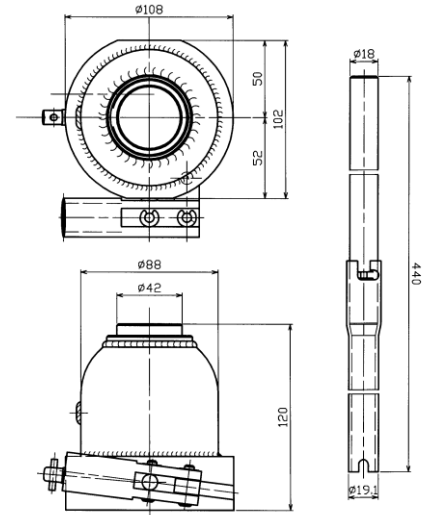
RMJ MINI JACK



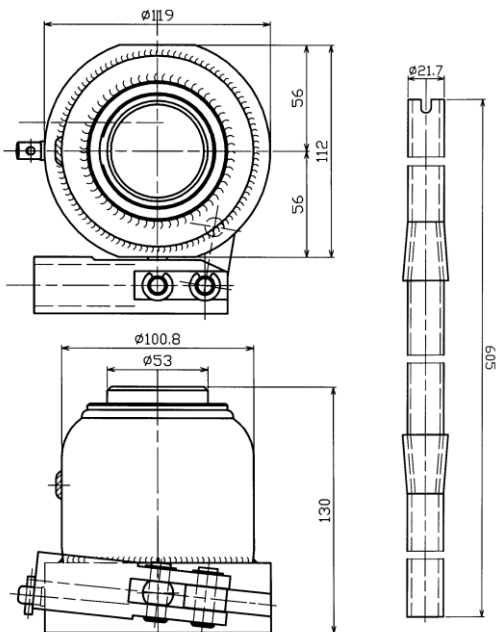
RMJ-5C



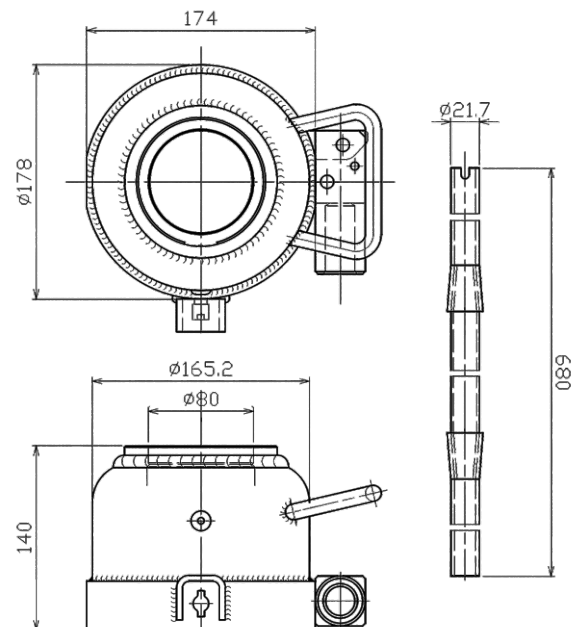
RMJ-5T



RMJ-10



RMJ-20



RMJ-50Y

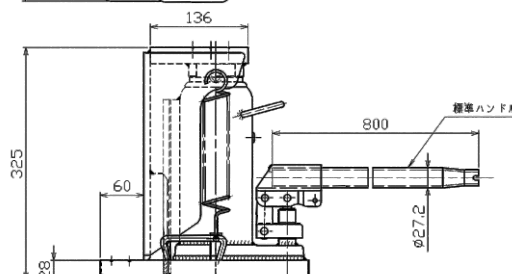
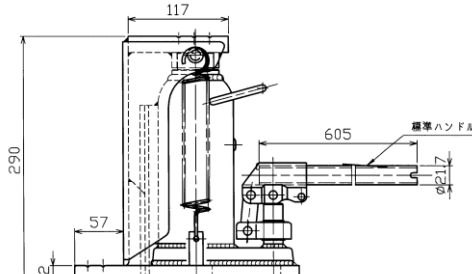
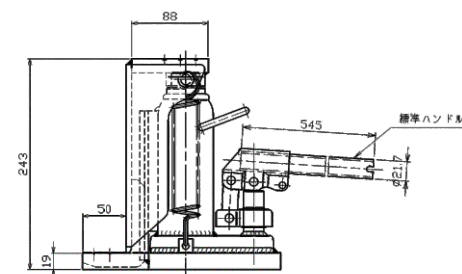
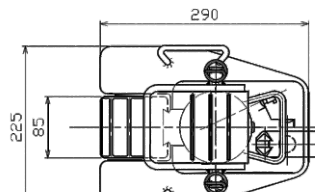
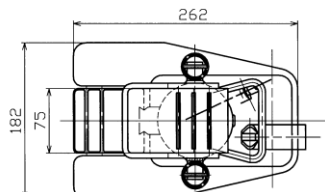
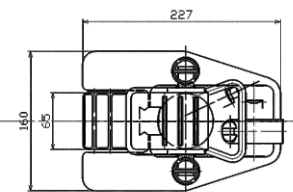


RIKEN

Specialized manufacturer of the best Hydraulic Jack

TOE JACK

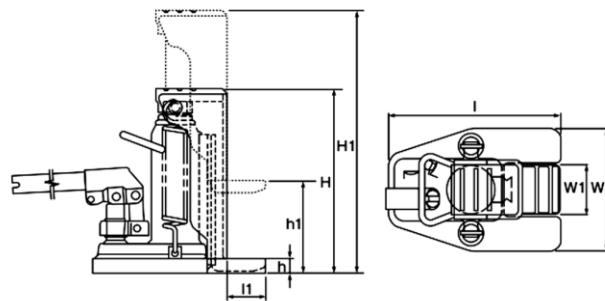
Riken Toe Jacks are Ideal jack for lifting loads with a low minimum jacking clearance. Uses an internal slide rail system for long life. Riken toe jacks are self retracting which eliminates manual lowering. The handle swivels 180° for operating in any direction.



RHC-2RS-2

RHC-5RS-2

RHC-10RS-2



Model	Capacity		Lowest position		Lifting Height (h1)	Highest position		Toe Dimensions (W1 x l1)	Base Dimensions (W x l)	Gross mass
	Ton	Toe	mm		mm	mm	mm			
			Head	Toe thickness (h)		Head (H)	Toe thickness (h1)	Head (H1)	mm	mm
RHC-2RS-2	2	5	19	243	113	132	356	65 x 50	160 x 227	13.2
RHC-5RS-2	5	10	22	290	120	142	410	75 x 57	182 x 262	19.1
RHC-10RS-2	10	20	28	325	145	173	470	85 x 60	225 x 290	36.0