



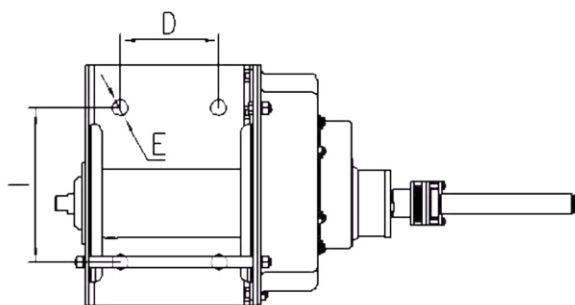
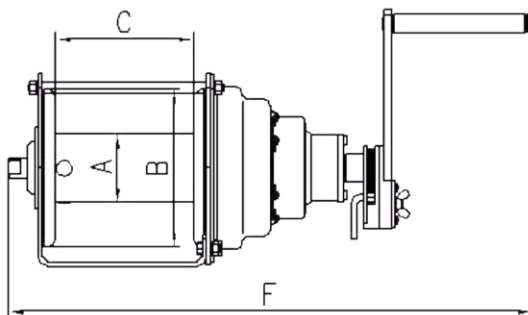
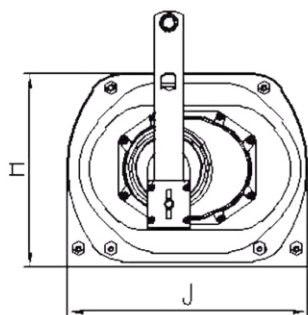
RIKEN

Specialized manufacturer of the best Brake Hand Winch

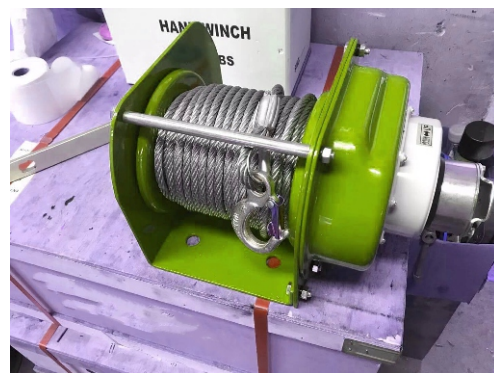
PNW HAND WINCH

Features

- Compact design
- Ergonomic rubber handle
- Multiple frame mounting positions
- Solid machined gear
- Dual cable anchor point
- Drill drive adapter standard on stainless steel. Optional on carbon steel
- Automatic weatherproof weston style load brake
- High gear ratio
- Test certificate & serial number
- For lifting or pulling/tensioning
- Left hand version of stainless steel winch available



All dimensions shown are in mm



		PNW-500	PNW-1000	PNW-2000	PNW-3000
CAPACITY		500KG	1000KG	2000KG	3000KG
SATE WORKING LOAD T		0.5	1	2	3
ADOPTED WIRE ROPE DIA(MM)×LENGTH(MM)		6.125	12.25	24.5	36.75
SPEED RATIO		Φ6.3×40	Φ8×40	Φ9×40	Φ12.5×40
THE MAX LENGTH OF LINK-POLE ACTION MM		4.33:1	12.19:1	22.68:1	29.16:1
MIN FORCE OF HAND TURN		350	350	350	350
(MM)	A	Φ60	Φ76	Φ90	Φ100
	B	Φ140	Φ175	Φ190	Φ230
	C	150	154	195	205
	D	100	110	155	155
	E	Φ15	Φ18	Φ18	Φ18
	F	403	443	490	549
	H	182	214	230	296
	I	130	170	170	170
	J	245	266	300	365
NET WEIGHT	KG	14.4	19.7	25.1	44.3



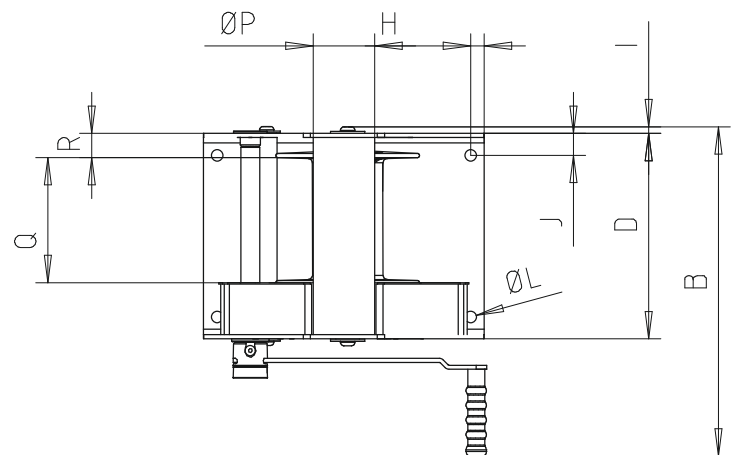
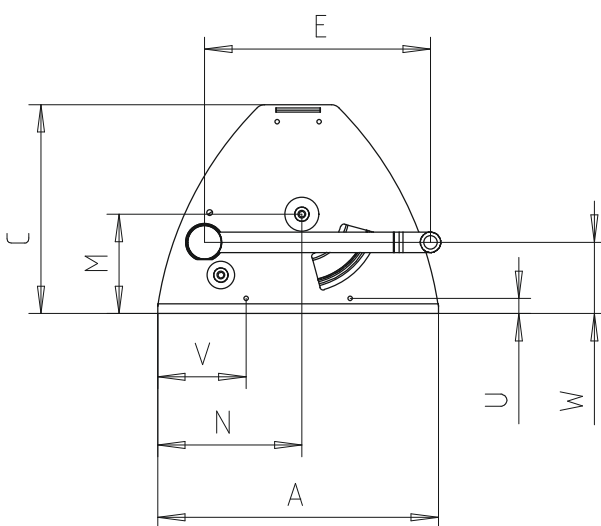
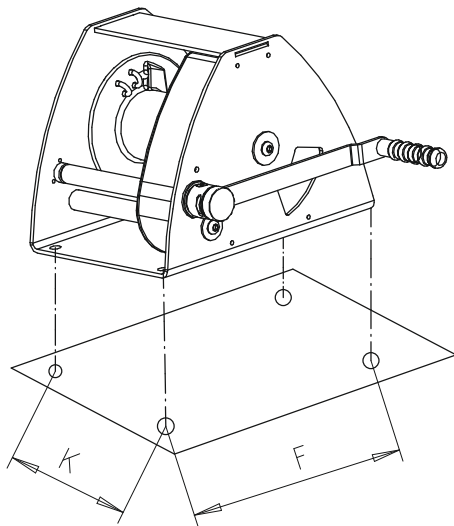
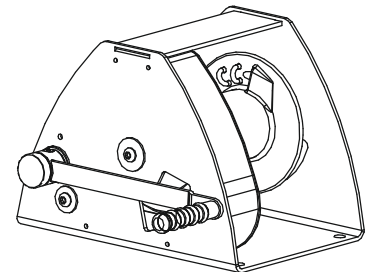
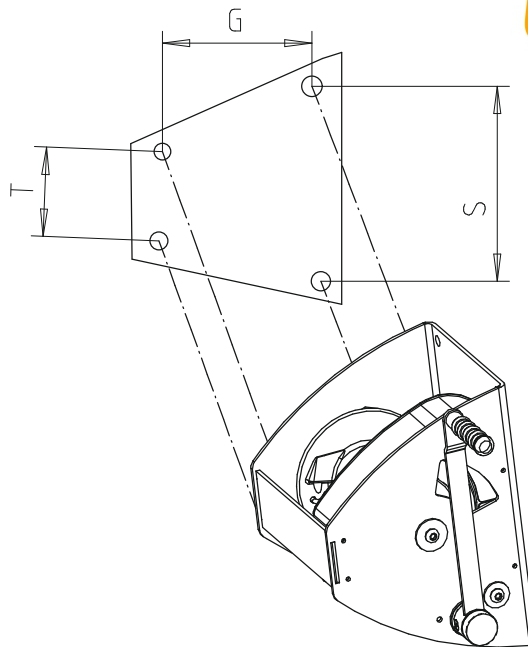
RIKEN

Specialized manufacturer of the best Brake Hand Winch

PSW HAND WINCH

Technical characteristics

- > Encased mechanical parts.
- > Automatic brake.
- > Adjustable and dismantable crank.
- > 2 securing planes horizontal or vertical (according to model).
- > Highly rugged design, thanks to the exceptional rigidity of the frame.
- > Mechanical parts protected by cataphoresis.
- > Can be unclutched when off-load, whilst impossible to unclutch under load



Force Kg	A	B	C	D	E	F	G	H	I	J	K	ØL	M	N	ØP	Q	R	S	T	U	V	W	X	
150	180	325	147	157	340	154	100	13	4	22	112	8Ø9	93	90	40	77	24	132	48	3				
300	249	400	190	217	240	200	145	18	8	37	144	8Ø13	95	120	62	124	25	184	76	25	33	58	51	
500	249	400	190	217	240	200	145	18	8	37	144	8Ø13	95	120	62	124	25	184	76	25	33	58	51	
1000	410	485	305	300	340	370	-	20	10	32	236	4Ø17	145	200	103	180	35	-	-	-	-	104	68	
2000	510	585	360	400	340	440	-	35	11	38	325	4Ø21	151	187	118	248	47	-	-	-	-	267	191	