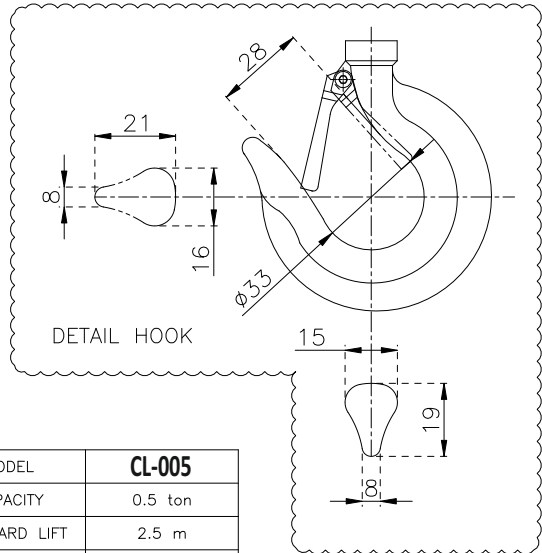
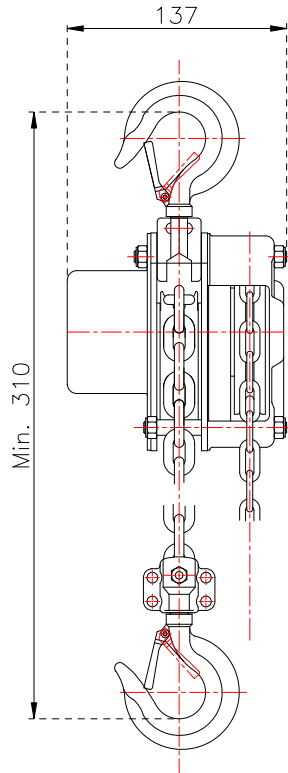
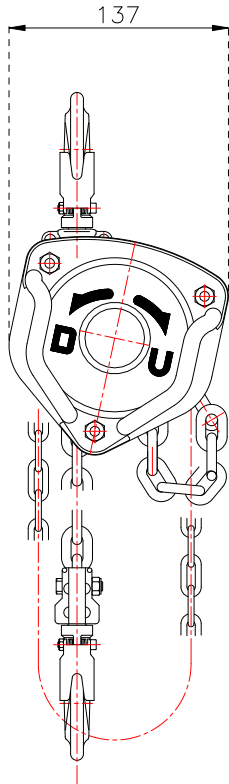




# RIKEN

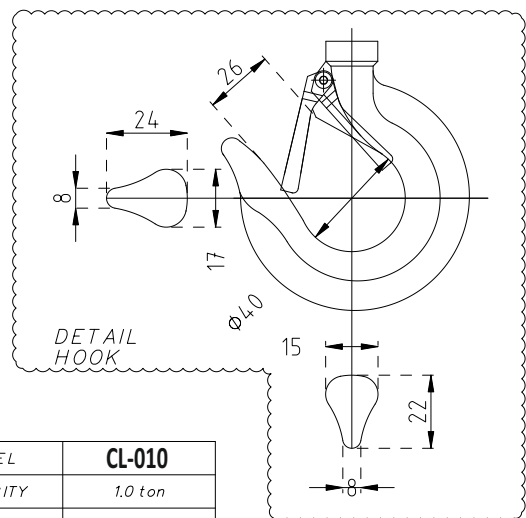
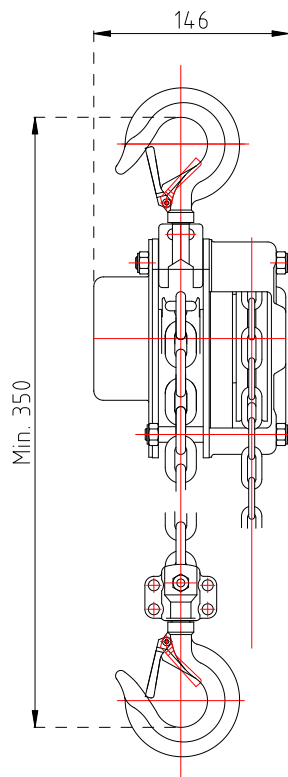
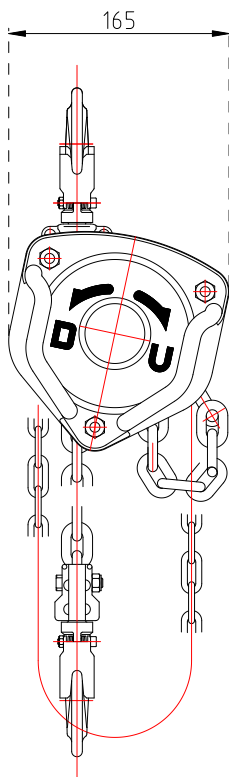
Specialized manufacturer of the best Manual Chain Hoist

## CL MANUAL CHAIN HOIST



MODEL	<b>CL-005</b>
CAPACITY	0.5 ton
STANDARD LIFT	2.5 m
TEST LOAD	0.75 ton
PULLING EFFORT	24 kg
LOAD CHAIN	ø6x1 lines
HAND CHAIN	ø5x25 mm
NET WEIGHT	10 kg

### CL-005



MODEL	<b>CL-010</b>
CAPACITY	1.0 ton
STANDARD LIFT	2.5 m
TEST LOAD	1.5 ton
PULLING EFFORT	32 kg
LOAD CHAIN	?6x.1 lines
HAND CHAIN	?5x.25 mm
NET WEIGHT	12 kg

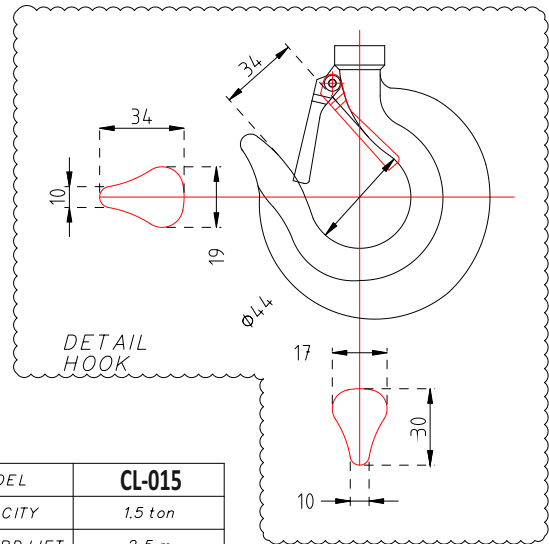
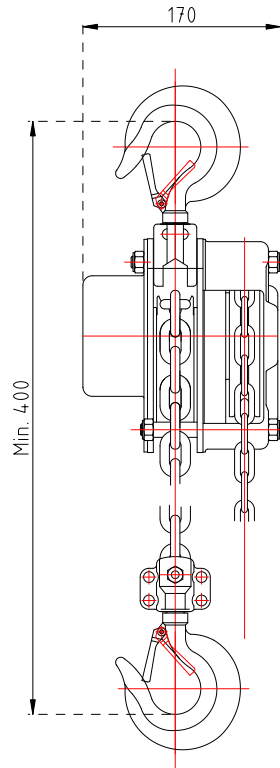
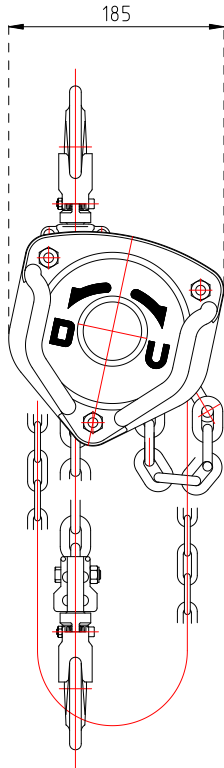
### CL-010



# RIKEN

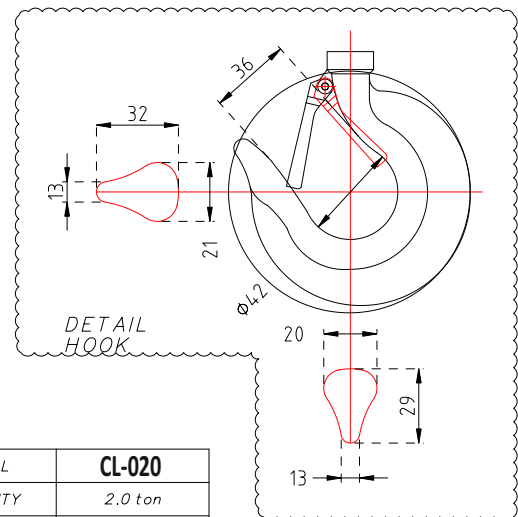
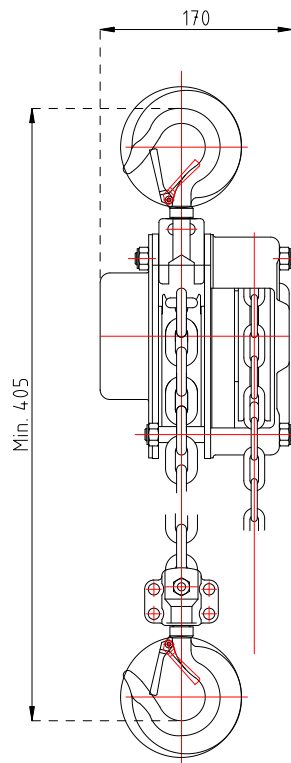
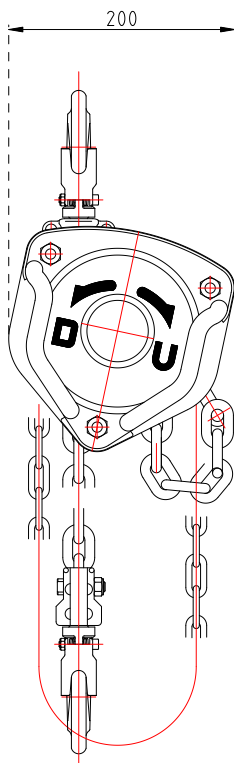
Specialized manufacturer of the best Manual Chain Hoist

## CL MANUAL CHAIN HOIST



MODEL	<b>CL-015</b>
CAPACITY	1.5 ton
STANDARD LIFT	2.5 m
TEST LOAD	2.25 ton
PULLING EFFORT	33 kg
LOAD CHAIN	?8x 1 lines
HAND CHAIN	?5x 25 mm
NET WEIGHT	19 kg

### CL-015



MODEL	<b>CL-020</b>
CAPACITY	2.0 ton
STANDARD LIFT	3.0 m
TEST LOAD	3.0 ton
PULLING EFFORT	37 kg
LOAD CHAIN	?8x 1 lines
HAND CHAIN	?5x 25 mm
NET WEIGHT	20 kg

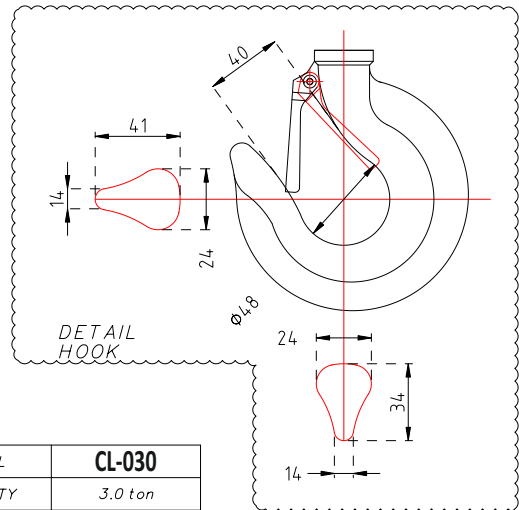
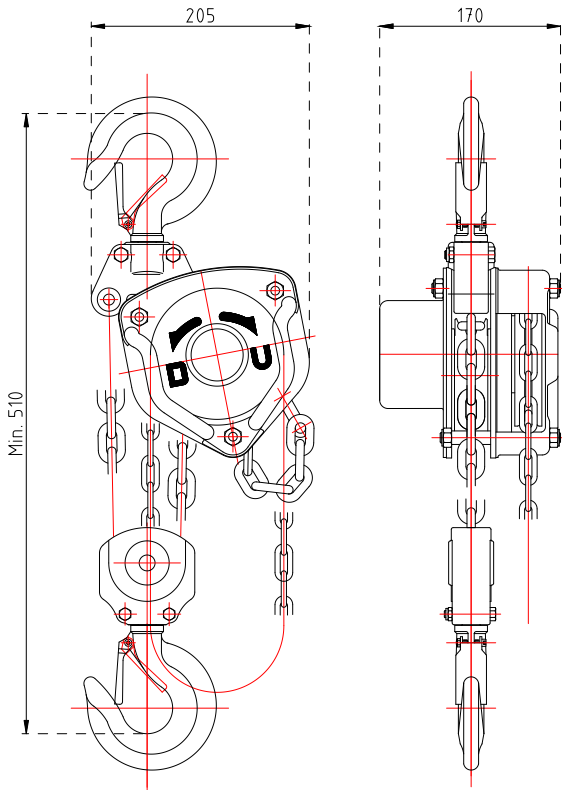
### CL-020



# RIKEN

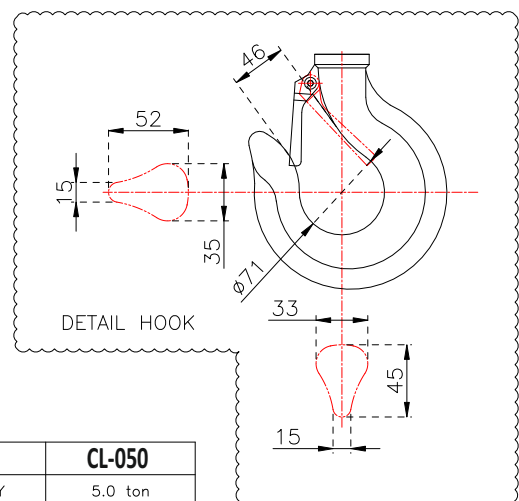
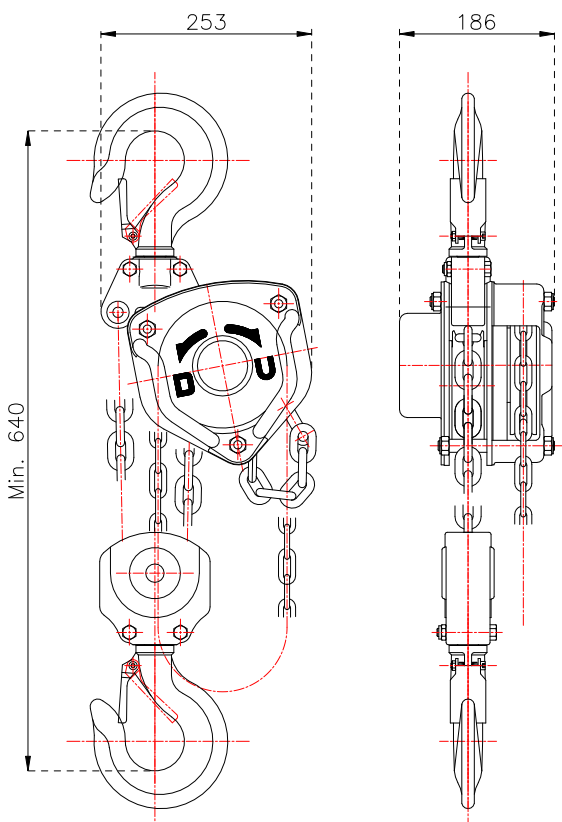
Specialized manufacturer of the best Manual Chain Hoist

## CL MANUAL CHAIN HOIST



MODEL	<b>CL-030</b>
CAPACITY	3.0 ton
STANDARD LIFT	3.0 m
TEST LOAD	4.5 ton
PULLING EFFORT	35 kg
LOAD CHAIN	78x2 lines
HAND CHAIN	25x25 mm
NET WEIGHT	27 kg

### CL-030



MODEL	<b>CL-050</b>
CAPACITY	5.0 ton
STANDARD LIFT	3.0 m
TEST LOAD	7.5 ton
PULLING EFFORT	42 kg
LOAD CHAIN	10x2 lines
HAND CHAIN	5x25 mm
NET WEIGHT	45.5 kg

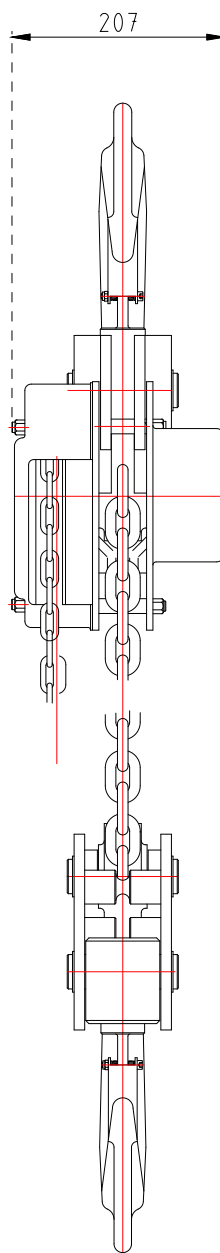
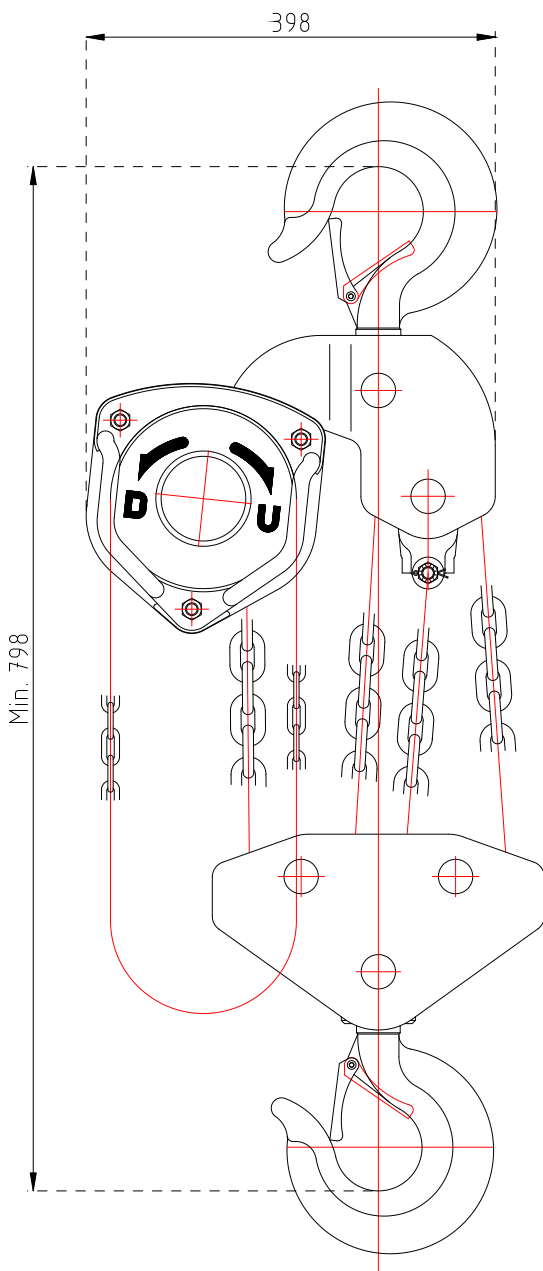
### CL-050



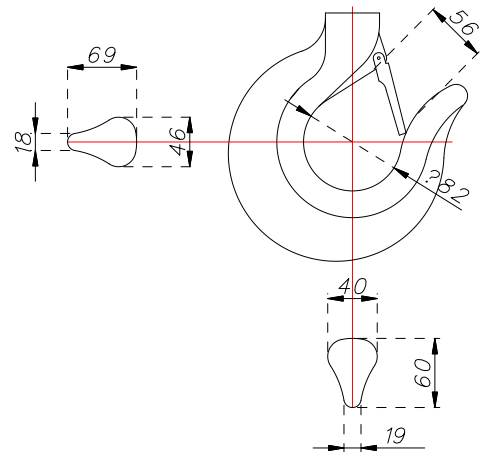
# RIKEN

Specialized manufacturer of the best Manual Chain Hoist

## CL MANUAL CHAIN HOIST



MODEL	CL-075
CAPACITY (ton)	7.5
STANDARD LIFT (m)	3.0
TEST LOAD (ton)	11.25
PULLING EFFORT (kg)	42
LOAD CHAIN (?x lines)	10x 4
HAND CHAIN (?x mm)	5.0x 25
NET WEIGHT (kg)	83



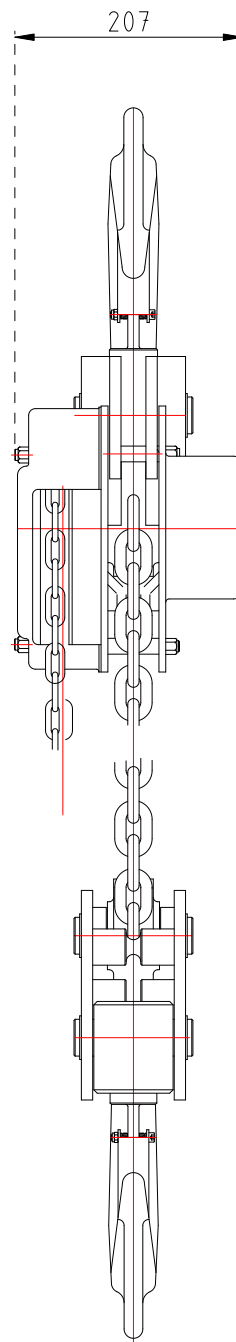
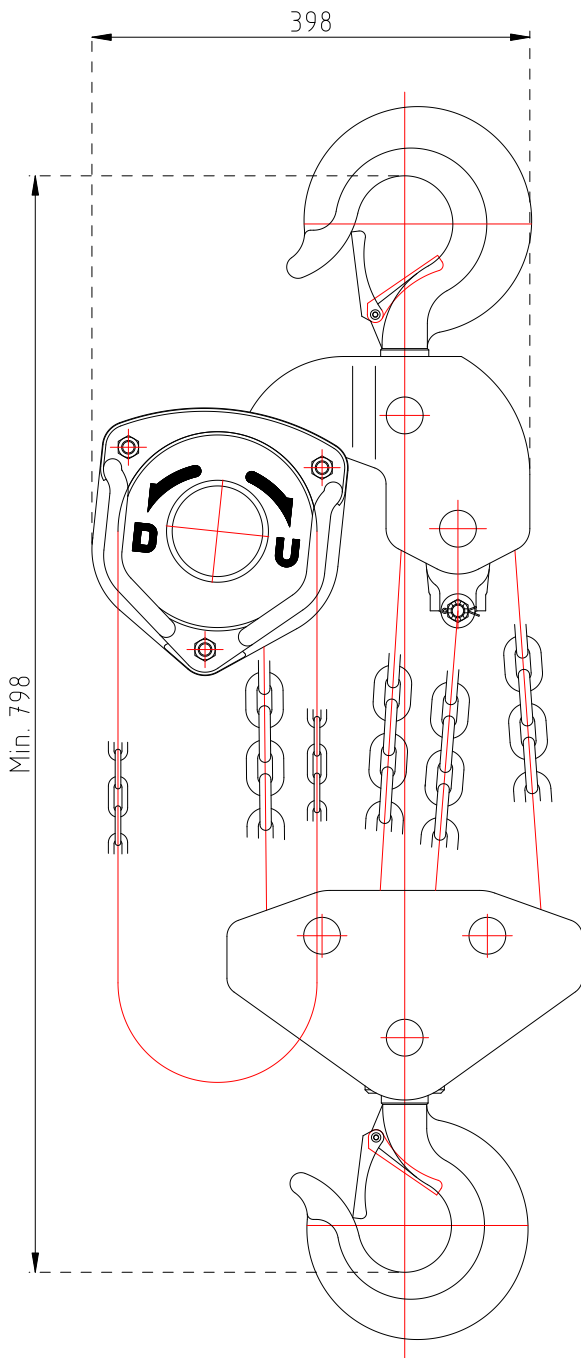
### CL-075



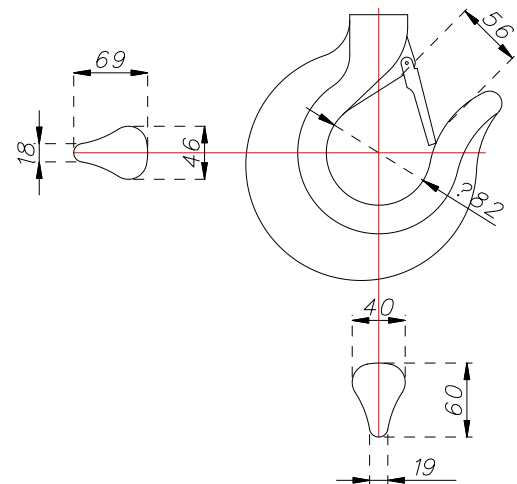
# RIKEN

Specialized manufacturer of the best Manual Chain Hoist

## CL MANUAL CHAIN HOIST



MODEL	CL-100
CAPACITY (ton)	10
STANDARD LIFT (m)	3.0
TEST LOAD (ton)	15
PULLING EFFORT (kg)	42
LOAD CHAIN (?x lines)	10x 4
HAND CHAIN (?x mm)	5.0x 25
NET WEIGHT (kg)	83



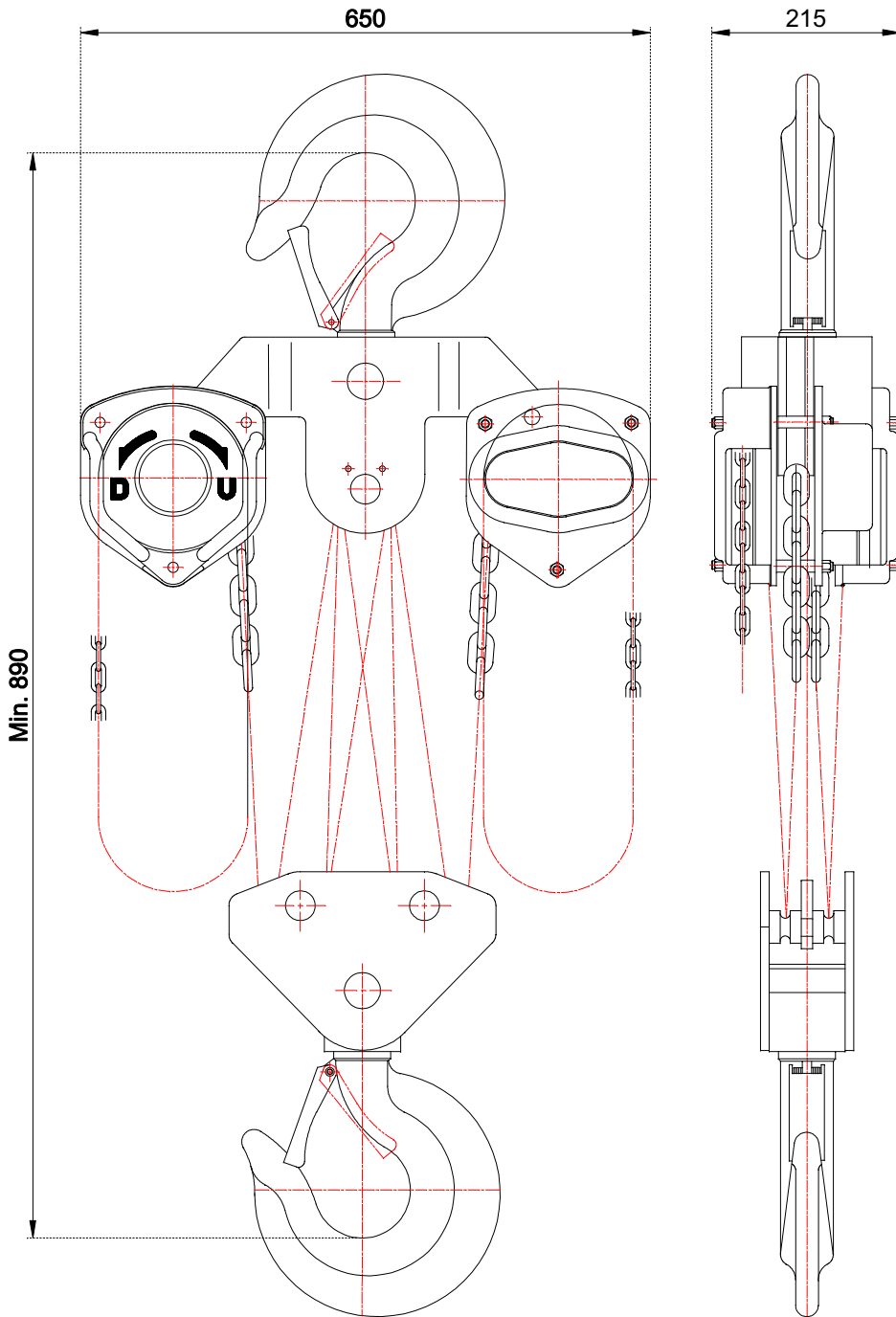
### CL-100



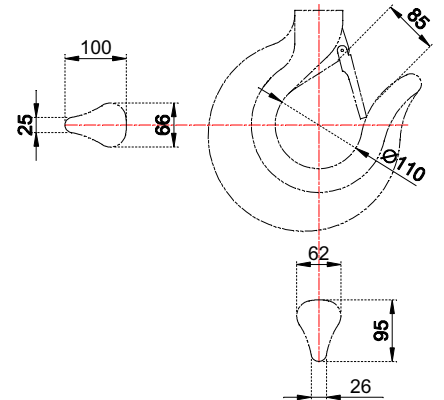
# RIKEN

Specialized manufacturer of the best Manual Chain Hoist

## CL MANUAL CHAIN HOIST



MODEL	CL-150
CAPACITY (ton)	15
STANDARD LIFT (m)	3.0
TEST LOAD (ton)	22.5
PULLING EFFORT (kg)	2x42
LOAD CHAIN (○xlines)	10x8
HAND CHAIN (○xmm)	5.0x25
NET WEIGHT (kg)	193



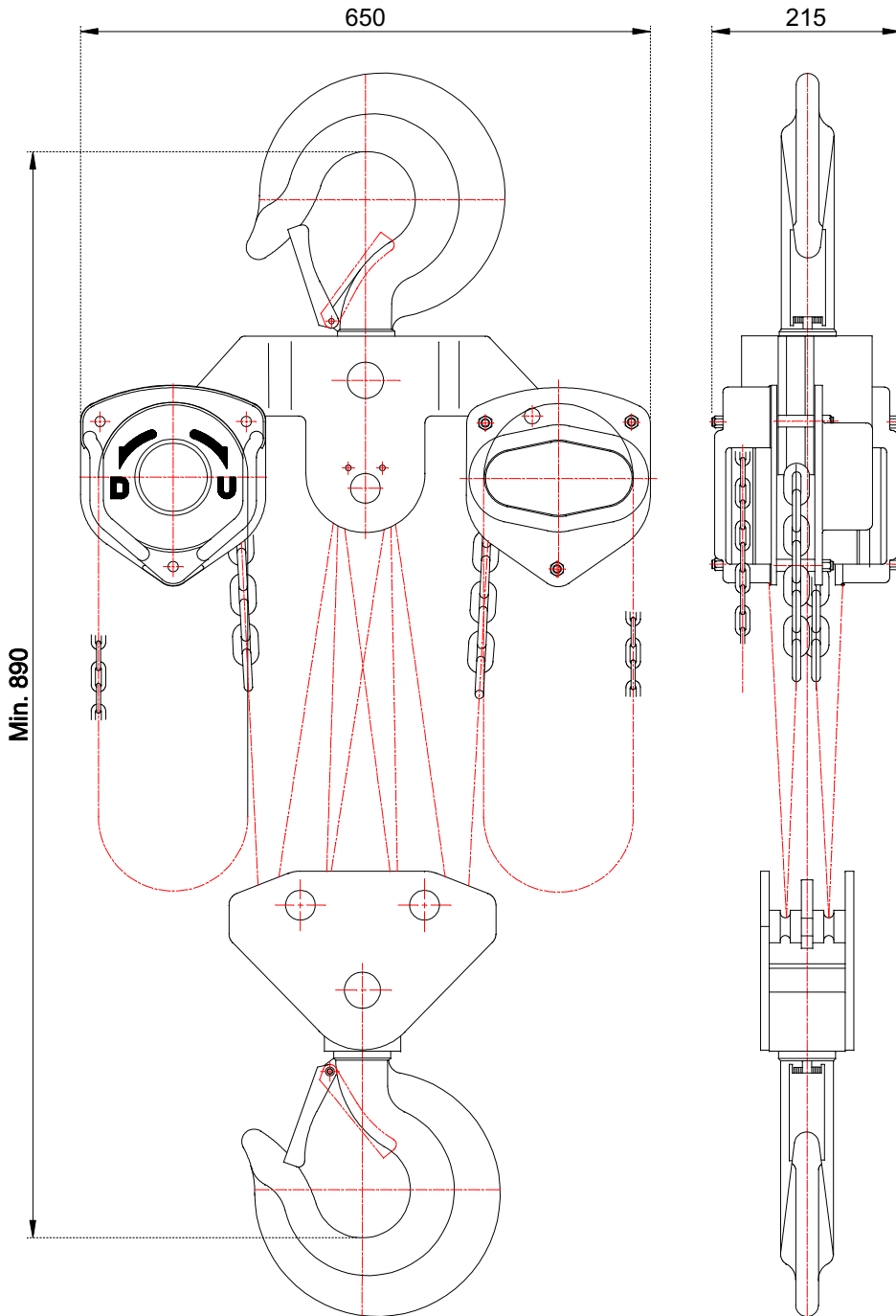
### CL-150



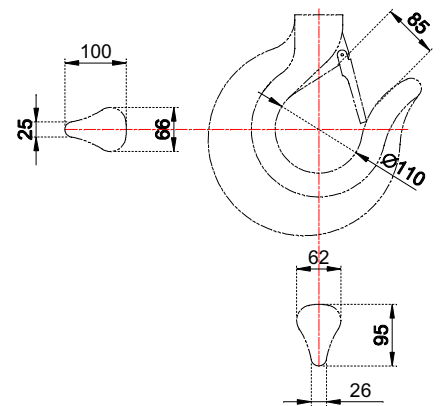
# RIKEN

Specialized manufacturer of the best Manual Chain Hoist

## CL MANUAL CHAIN HOIST



MODEL	CL-200
CAPACITY (ton)	20
STANDARD LIFT (m)	3.0
TEST LOAD (ton)	30
PULLING EFFORT (kg)	2x42
LOAD CHAIN (lines)	10x8
HAND CHAIN (mm)	5.0x25
NET WEIGHT (kg)	193



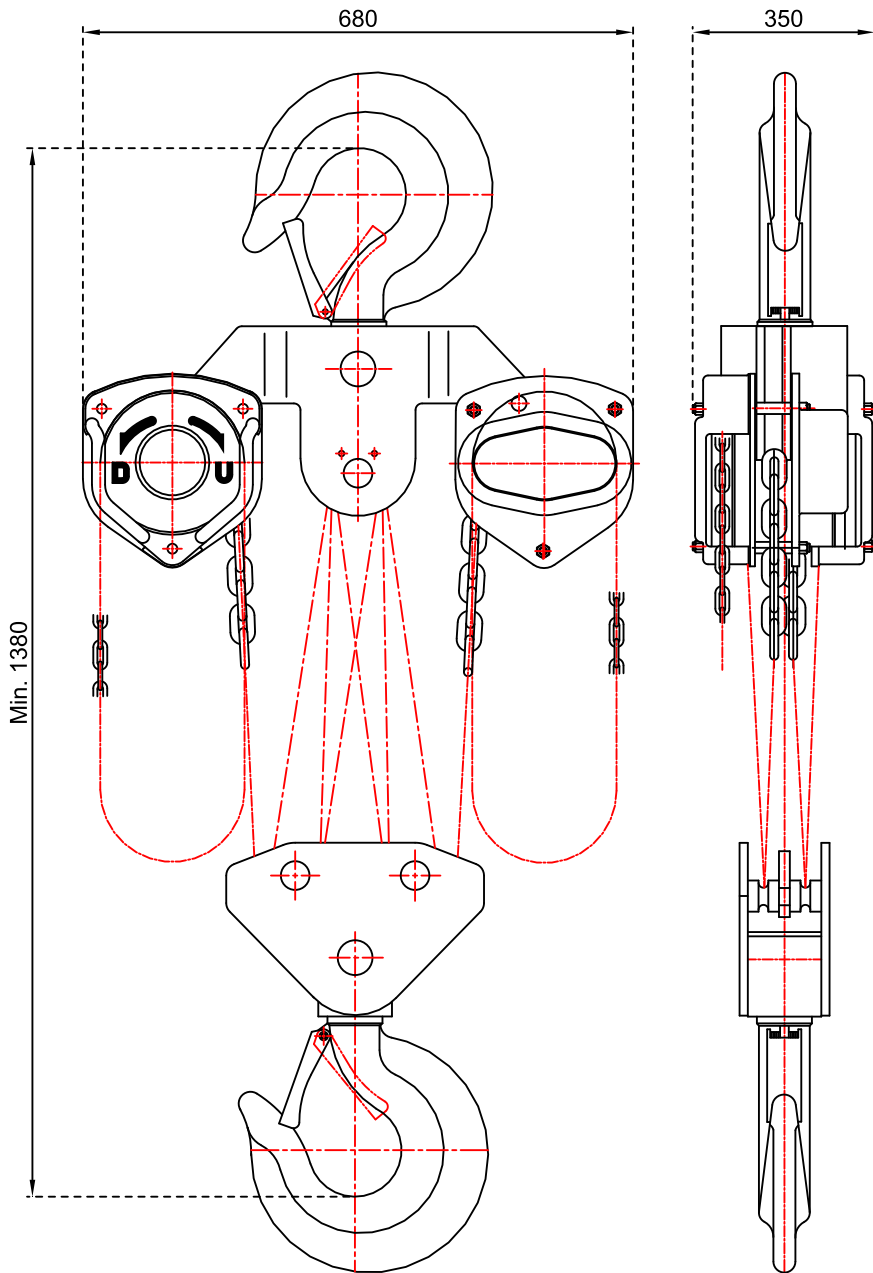
### CL-200



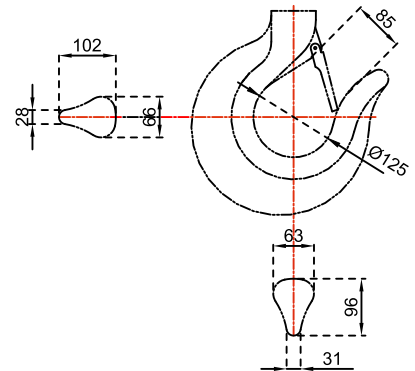
# RIKEN

Specialized manufacturer of the best Manual Chain Hoist

## CL MANUAL CHAIN HOIST



MODEL	CL-300
CAPACITY (Ton)	30
TEST LOAD (Ton)	38
STANDARD LIFT (m)	3.5
PULLING EFFORT (kg)	2x42
LOAD CHAIN (Øxlines)	10 x 12
HAND CHAIN (Øxmm)	5.0 x 25
NET WEIGHT (kg)	268



### CL-300